



癌症基金會  
**CANCERFUND**  
So no one faces cancer alone



**Hong Kong Cancer Fund**

# **ANNUAL REVIEW**

**2021-2022**

So No One Faces Cancer Alone

## Dear Donors, Supporters and Friends,



We are so grateful to everyone who has supported us during this difficult time as we went through our second year with COVID-19 and the impact the pandemic has had on everyone's lives and livelihoods.

Due to the social distancing restrictions and the onslaught of the highly contagious Omicron variant our Head Office and Support Centres were in a constant state of flux from opening full time to having split shift teams and moving programmes from face-to-face back to Zoom. Our frontline teams were able to navigate these changes seamlessly.

We continued to offer all of our free professional services to anyone touched by cancer and meeting the clients' needs has always been at the forefront of our minds. During this fiscal year our frontline teams provided 897 programmes for 12,766 people with 1,883 sessions.

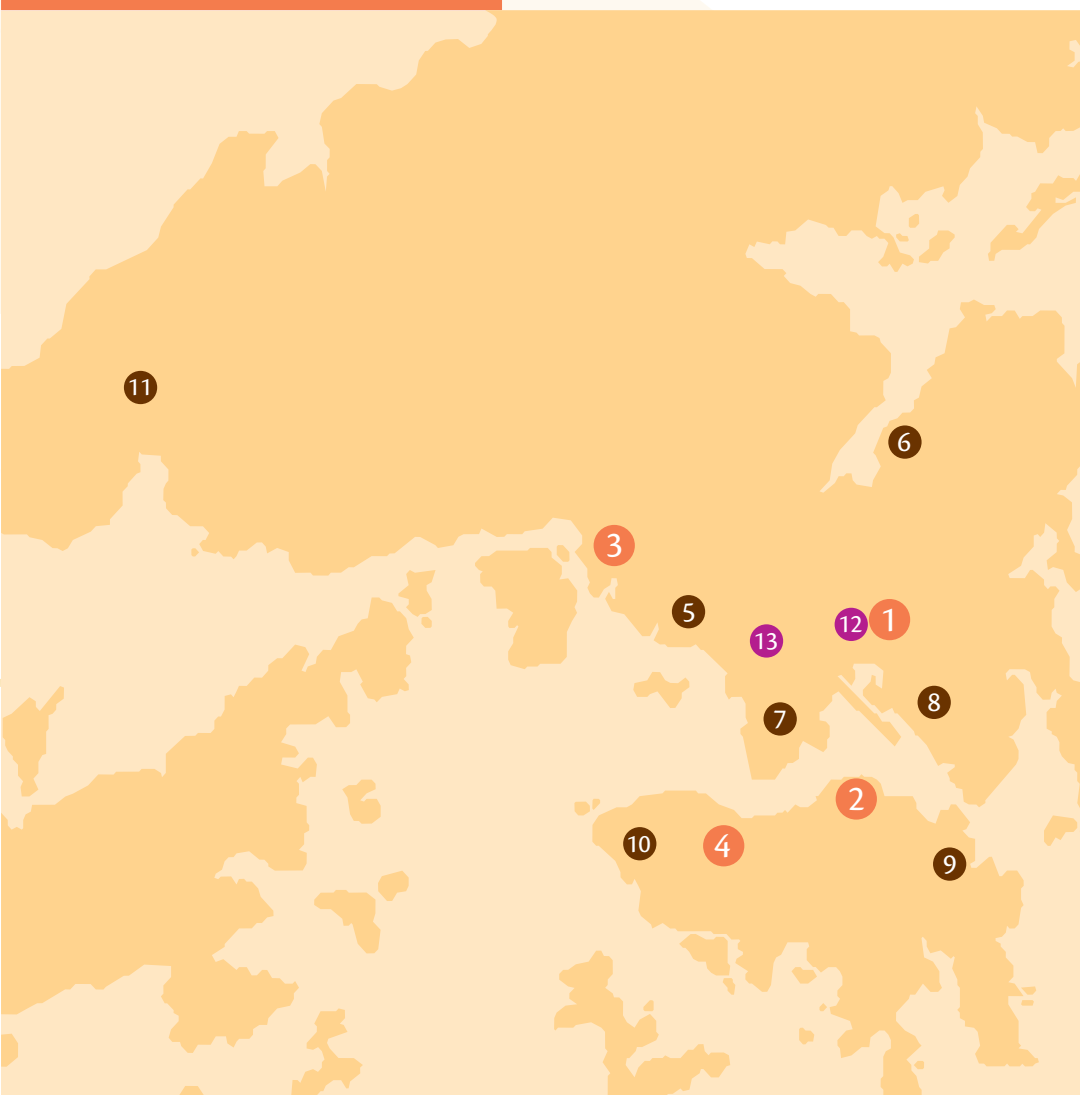
In addition, our Wellness team organised 504 programmes providing 1,000 in-person and live-streaming sessions with more than 20,000 attendances. More Wellness class videos and audios were produced for our YouTube channel to help our clients release stress and better manage side-effects.

The pandemic adversely impacted our fundraising and Circle of Friends monthly donations with many donors terminating their membership due to the difficult economic climate. So once again we are truly grateful to all of our loyal supporters, staff and volunteers who help us provide our free services to more people and to remain the leaders in cancer supportive care in Hong Kong.

With lots of love,

Sally Lo, BBS, MBE  
Founder and Chief Executive

OUR SERVICE NETWORK



Cancer Fund Support Centres

- ① Wong Tai Sin
- ② North Point
- ③ Kwai Chung
- ④ Central

Cancer Patient Resources Centres

- ⑤ Princess Margaret Hospital
- ⑥ Prince of Wales Hospital
- ⑦ Queen Elizabeth Hospital
- ⑧ United Christian Hospital
- ⑨ Pamela Youde Nethersole Eastern Hospital
- ⑩ Queen Mary Hospital
- ⑪ Tuen Mun Hospital

Centres for Special Needs

- ⑫ Hong Kong Stoma Association
- ⑬ New Voice Club

## You Are Our Support

We receive no funding from the government or Community Chest and rely solely on the support of the generosity of individuals and companies. We are continually surprised by our Circle of Friends who provide us with the much needed guaranteed monthly support. Knowing we have them behind us gives us the opportunity to grow and continue to provide our free professional services. To find out more about our Circle of Friends, please call **3667 6332**.

## Contents

- P.4 Our Core Services
- P.7 Who We Are Supporting
- P.8 Feldenkrais Method
- P.9 Wellness Programmes
- P.10 Public Education
- P.12 Fundraising
- P.14 Financial Highlights
- P.16 Acknowledgments



## How We Help

To ensure that we fulfil our mission that no one faces cancer alone, the Hong Kong Cancer Fund strives to serve the community with free comprehensive and professional care. Treating cancer takes more than just medicine and we are at the forefront of offering psychosocial care and wellness classes, art therapy, peer support, dietetic advice, counselling and so much more. Our core focus has always been to provide professional tailored services to our clients and their families.

### 45,648 Attendances Recorded at our 4 Cancer Support Centres

Our four Cancer Support Centres respond to the practical, psychological, family and peer support needs of all people touched by cancer through consultations, programmes, workshops and supportive services. We had over 45,000 in attendance at our programmes, all receiving professional advice – that’s around 157 visits per day!



4 Cancer Support Centres



157 Visits a day

**“Cancer doesn’t only affect patients but also the entire family. As a result, we adopt a family-centred approach to empower and serve the whole family. We believe that with the right support, families have the potential to recover and grow together.”** Sally Lo, Founder and Chief Executive.



**8,581 People received one-off consultations**

### Holistic Care

We welcome anyone touched by cancer to drop into our Support Centres to share their concerns and worries during their cancer journey or to ask for the latest information on cancer. Some people need advice on symptom management, nutritional requirements and professional guidance for each stage of their treatment and recovery. Our caring team of social workers, counsellors, oncology nurses, clinical psychologist, art therapist and dietitian are here to help.



**45,648 Attendances**

### Psychosocial Therapeutic and Nursing Care Programmes

Thanks to modern medicine, more people are surviving cancer. The diagnosis and treatment can be difficult for patients and their family members. To enhance our patients' quality of life, our professional team offers tailor-made care to those who are transitioning from treatment to long-term survivorship. In the fiscal year of 2021-2022, we provided 897 programmes for 12,766 users over 1,883 sessions.



**1,164 Parents and children**

### Rainbow Club Reaching Children in Need

Our Rainbow Club supports children and helps them understand their parent's cancer diagnosis and the family's challenges arising during the cancer journey. We offered five different programmes during the year including: early intervention, art therapy sessions, psychosocial workshops, family normalcy programme and bereavement group. We helped 617 children and 547 parents over 57 programmes with 114 sessions.





638 Users

### Advanced Cancer and Bereavement Care Projects

Advanced cancer impacts on the quality of life of patients and their families in different aspects. We adopt a multi-disciplinary case management approach to help participants cope with the challenges they face and prepare them to address the anticipated grief and bereavement of a patient. Our programmes cover an array of topics from our Family Photo Album Making Workshop; Diet Tips for Advanced Stage Cancer; Preparing a Good Death Tour; and Property Management Legal Consultations etc. We provided 638 users with 2,925 sessions with 3,751 attendances.



15,668 Friends of CancerLink

### Finding Hope through Peer Support

Friends of CancerLink (FOC) is a network of 21 self-help groups that provides peer support, important exchange of information, rehabilitation services and encouragement to individuals touched by the same type of cancer. We provide funding, a networking platform, guidance on programmes offered, and a place to meet for these groups. Last year we had 15,668 members.



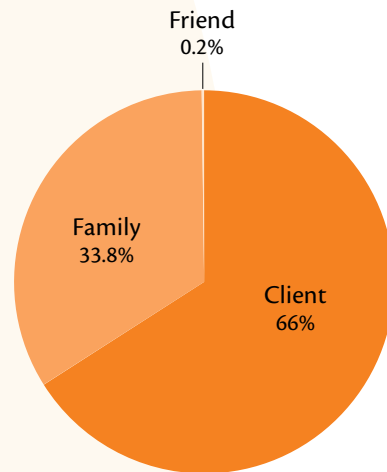


# Who We Are Supporting

By knowing more about who we support, we are able to constantly evolve and provide relevant services to meet the specific needs of everyone accessing our Cancer Support Centres.

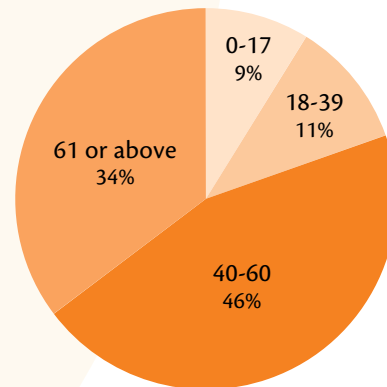
## User Identity

Our family-centred approach extends our support services to not just clients but their families and caregivers too, ensuring everyone benefits from a higher quality of life while coping with cancer.



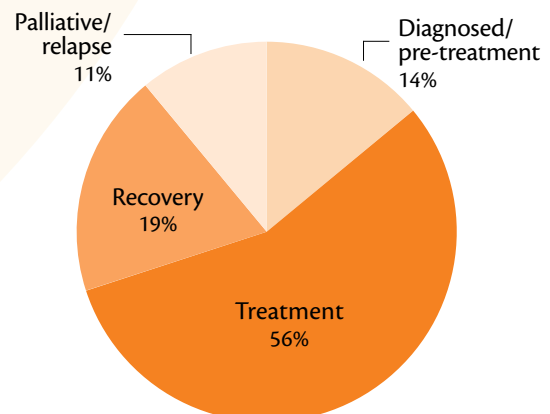
## Client Age

Almost half the people we see are aged between 40 and 60 years old who, due to employment and family commitments, are especially vulnerable; physically, psychologically and financially.



## Cancer Stage

From the moment of diagnosis, through treatment and into recovery, we have professionally tailored support and services to meet differing needs across all stages of cancer.



# WELLNESS



**“My body feels lighter and I can now move more smoothly. I can stand up with better balance after the class. I felt sleepy but good!” Ms N S Chan, Feldenkrais Method participant.**

Our wellness programmes offer physical, psychological, emotional and spiritual benefits to help our clients take a holistic approach to their wellbeing while coping with cancer. We know that this can positively impact medical outcomes along with quality of life for survivors and their families.

The Feldenkrais Method, Awareness Through Movement (ATM), uses gentle movement and directed attention to improve human functioning. The classes involve lying on a yoga mat, with your eyes closed, whilst the facilitator guides you to gently move your body in an unfamiliar way so that your brain can make new connections and learn new ways to operate your body. As you focus on slowly improving the quality of movement, unnecessary muscle tension throughout the body can be reorganised and released. After the 90-minute class you feel both the body and mind are calm, fully re-energised and at ease.

We have been offering this unique wellness class since 2012 and in the last 10 years have conducted over 225 sessions with 1,870 attendances. Our classes and programmes have included ‘The Healthy Vision’ session which will help improve your eye health, ‘The Freeing the Neck and Shoulders’ workshops and ‘Healthy Knees and Ankles’. We also have 14 Online YouTube Audio Sessions that we started in 2016 as the demand for the programmes increased.

View our online wellness videos on Hong Kong Cancer Fund’s website and YouTube channel.



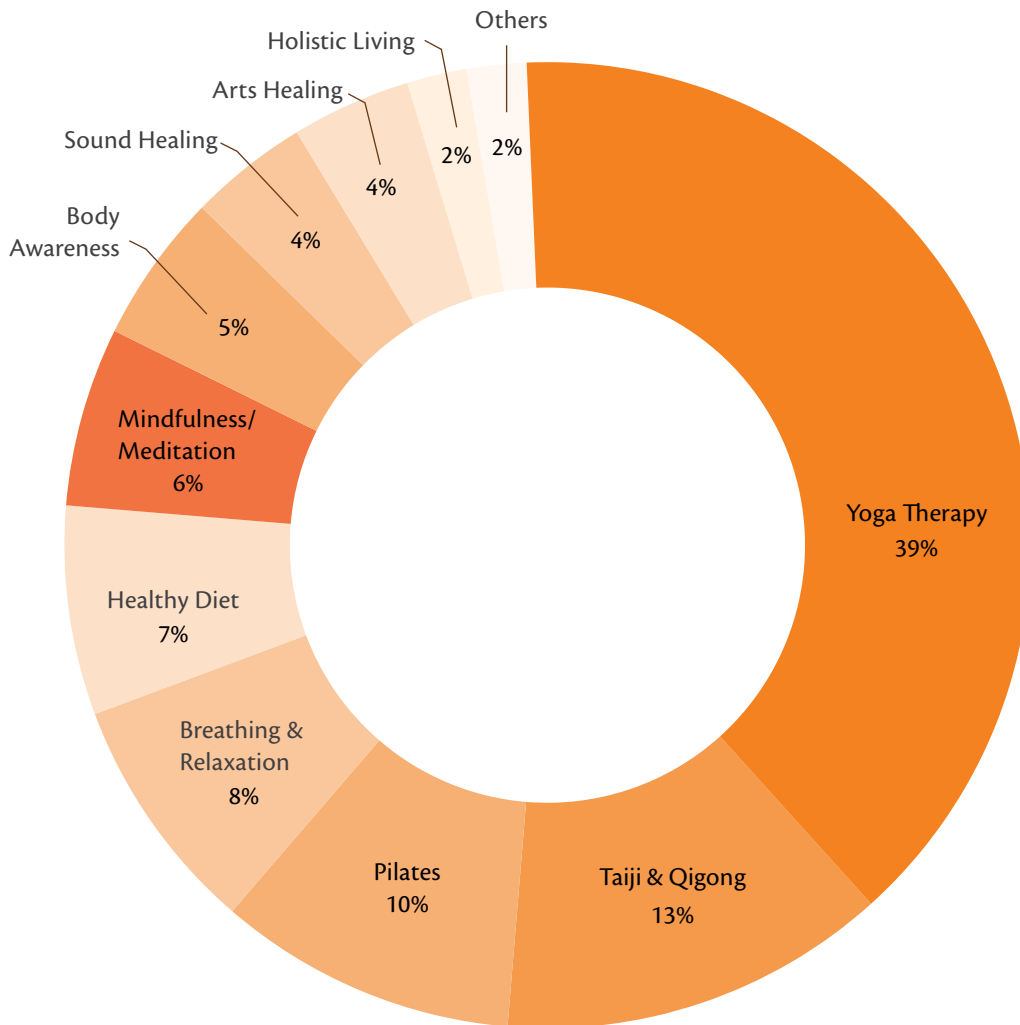
Website



YouTube channel



## 11 Types of Mindfulness-based Programmes



**Our users:** Aged between 23 and 94, 56% of users diagnosed between 2017 and 2021.



**1,086 total sessions of programmes offered**



**21,268 attendances**



**504 programmes**



**1,375,882 YouTube video views**



**1,176 participants**

# Promoting Awareness

Early detection and healthy living are at the heart of our public education campaigns. We helped build a cancer-smart community in Hong Kong through mass media channels including TVC, print, out-of-home advertisements and digital platforms with the following key projects this year:

## Breast Cancer Campaign

- As one of Hong Kong's largest breast cancer campaigns, Pink Revolution included print ads, feature editorials and advertorials, radio and key visuals displayed in high-traffic MTR stations, minibuses and bus shelters
- Ms Sammi Cheng continued to be our Pink Ambassador
- A new set of creative materials were created under the theme "From Mi to We", to drive more engagement with the public
- We invited a number of celebrities and KOLs to blast out the message of "Be Smart. Self-check" through the use of our Pink pom pom on their social media platforms



## Prostate Awareness Campaign

- We were the official Movember beneficiary again this year
- We highlighted the most common symptoms for prostate cancer
- We encourage all men over the age of 50 years old to do regular checks

## Colorectal Cancer

- Reminding people about the symptoms of colorectal cancer
- We recommend anyone with a family history or aged 50 years old or above to do regular colonoscopies



## Reach and Response to Call to Action

Campaign	People Reached	Response to Call to Action	vs People Reached
Colorectal cancer	4,122,143	3,274,891	79%
Breast cancer	5,111,300	3,611,113	71%
Prostate cancer	5,111,300	2,803,884	55%

Remarks: Results were projected figures in the HK population by Nielsen through post-campaign surveys among the general public aged 15-65.

## Online and Social Media

Our website had over 300,000 visitors in the past financial year with page views up to nearly 900,000. Our Facebook activities continued to increase from last year, including followers, total page reach and impressions. This highlighted that our range of content was able to reach a larger demographic and diversity of people.

Website	Apr 21 - Mar 22
No. of Visitors	303,460
Page Views	898,468

Facebook	Apr 21 - Mar 22
No. of Followers	39,600
Total Page Reach	7,574,022
Total Page Engagement	8,437,253



## Publications

We expanded our distribution network for our cancer booklets by 17% with a total number of outlets now at 34. We updated 4 publications this year: Skin, Pancreas, Brain Tumour and Breast Care. We also added 6 e-pub booklets onto our website.



Fundraising

## Everyone Can Help

### Pink Revolution

Breast cancer affects 1 in 14 women in Hong Kong and this year we were delighted that over 110 organisations joined us on Dress Pink Day and more than 6,500 participants donated during our Pink Revolution Campaign. We raised a total of HK\$2,860,450 to help provide our much-needed professional support to anyone who has been touched by breast cancer.



### Virtually Making Strides for a Cure

Due to the government restrictions for COVID-19 our annual walkathon was a virtual event for the second year running, this year we held the event in March 2022. Despite the surge in cases with the Omicron outbreak we were delighted to have 443 people register for the event and received a total of HK\$1,721,979.

### Fine Art Asia

We were delighted that Fine Art Asia was held at the Hong Kong Convention and Exhibition Centre in October 2021. Twenty-three generous contemporary artists donated their latest pieces to us to raise funds and awareness at our charity booth at this unique platform celebrating the city's art community, raising a total of nearly HK\$1 million. Thank you to Eric Leung and everyone involved.





## Our Monthly Donors

The main source of income for our free professional services comes from our monthly donors, our dedicated Circle of Friends who have provided ongoing support to us over the years. In the last year alone we have seen over HK\$56 million generously donated. Our Circle of Friends members are the stabilising force which keeps us operational and able to provide support to the growing number of people who require cancer care in Hong Kong. Ultimately, our Circle of Friends members are just people giving to people. All monthly donations go directly to fund our frontline services and make a real difference and impact to the lives of anyone touched by cancer.

The COVID pandemic over the last few years has restricted our gatherings where Circle of Friends member can experience firsthand how their contributions are affecting the lives of our clients. However, we will continue to look to the future when we can once again share the stories of people who have benefited from our services directly to our donors. We want them to feel aligned with our mission to ensure that no one faces cancer alone.

If you would like to become a monthly donor please scan our QR code or call 3667 6332.



“I had always wanted to give back to my community and help those in need, however my busy schedule made it difficult for me to find the time to volunteer. That’s why I chose to join Cancer Fund’s monthly giving programme, Circle of Friends, so that I can contribute in a different way”

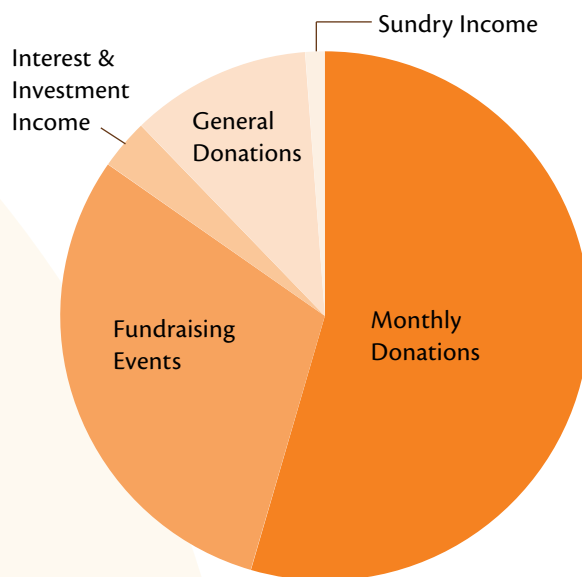
**Ms To**  
**Circle of Friends**  
**member**

## Financial Highlights

### Source of Overall Income

Monthly Donations	54.53%
Fundraising Events	30.18%
Interest & Investment Income	3.07%
General Donations	11.03%
Sundry Income	1.19%

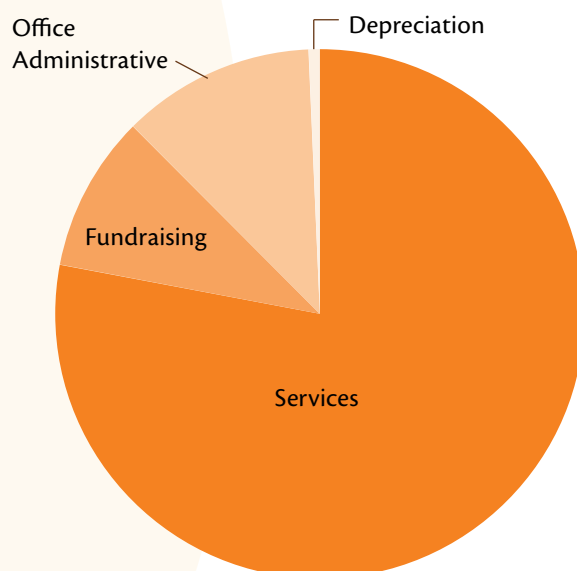
**Total Income** HK\$103,839,688



### Expenditure Distributions

Services	77.99%
Fundraising	9.54%
Office Administrative	11.80%
Depreciation	0.67%

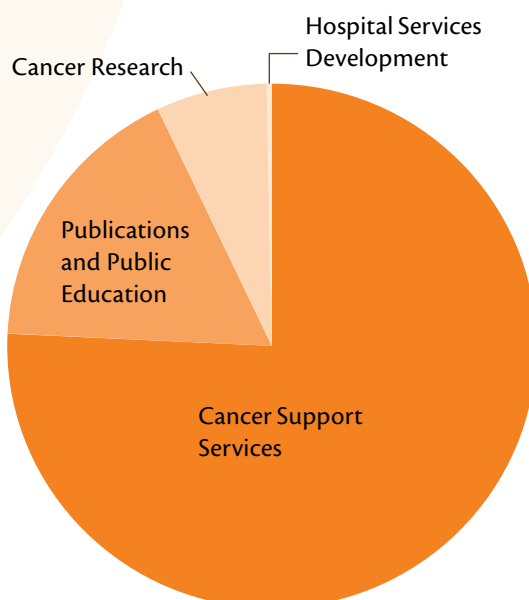
**Total Expenditure** HK\$80,775,420



### Service Distributions

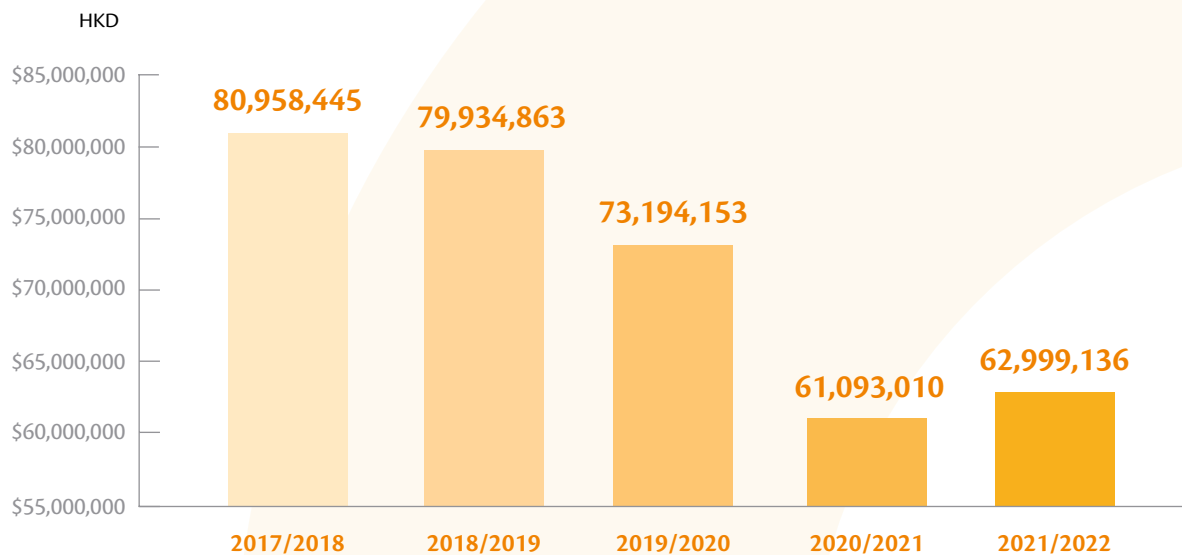
Cancer Support Services	75.75%
Publications and Public Education	17.18%
Cancer Research	6.77%
Hospital Service Development	0.30%

**Total Expenditure** HK\$62,999,136

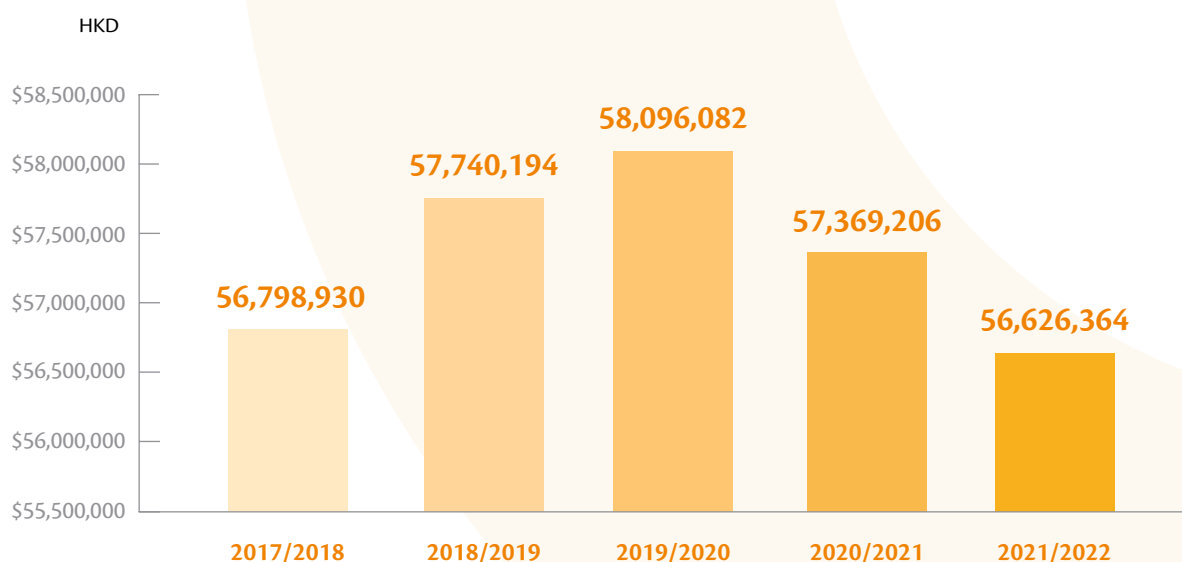


Note: The percentage is rounded up to 2 decimal places.

## Services: 5-Year Development



## Monthly Donations Income: 5-Year Development



# THANK YOU TO ALL OUR SUPPORTERS

We would like to acknowledge and thank the following friends, volunteers, individual donors and Circle of Friends members. Your generosity and continued support allows us to offer our FREE services, so no one faces cancer alone. (In arbitrary order)

## CIRCLE OF FRIENDS

### Regular Donors

### MAJOR GIFT

Miss Paddy Shok-H Chan  
Ms. Chan Ming Chu, Theresa  
Miss Chan Yuk-King, Michelle  
Dr. Chan Suk Yin  
Mr. Chen Peter  
Mr. Chee-Choong Chew  
Mr. Yibing Ding  
Mr. James Filmer-Wilson  
Mr. Timothy Freshwater  
Ms. Fong Hong Yee, Connie  
Mr. Fu Hau-Chak, Adrian  
Mr. Peter Ha  
Mr. & Mrs. Merle A. Hinrich  
Mr. Ho Chi-Cheong  
Ms. Ho Chui Hang, Lina  
Ms. On-Ming Kwok, Anna  
Miss Siu-Kuen Law  
Miss Ioc-Heng Lei  
Mr. Leung Hoi-Ming  
Mr. & Mrs. Michael John Lonergan  
Dr. Tin-Ging Ma, Hector  
Mr. Man-To Ng  
Mr. Clive Noffke  
Mr. Pei Cheng Ming, Michael  
Dr. Chi-Shing Siu, Gerald  
Mr. & Mrs. Frank J. Sixt  
Miss So King Wai  
Ms. Sung Miu Ling, Grace  
Mr. & Mrs. Philip Tose  
Dr. & Mrs. Shui-Chung Wang, Patrick  
Ms. Ching-Yee Wong, June  
Miss Suet-Fun Wong, Betty  
Ms. Tan-Nai Wong  
Miss Wu Oi-Chee  
Mr. Chung-Hong Yau, Peter  
Ms. Lau-Kum Yeung  
Ms. Yue Mui-Fun  
Chau Hoi Shuen Foundation Limited  
Chou's Foundation  
Chun Wing Building Materials Company Ltd.  
Commanderie de Bordeaux (HK) Foundation Ltd.  
CW Financing Limited  
Fenswick Company Limited  
Green Family Foundation  
Hay Nien Foundation Limited

John Pearce Foundation  
Joyce M Kuok Foundation  
K. S. & Feili Lo Foundation Limited  
Lim Peng Suan Charitable Fund  
M Moser Associates Ltd.  
Ng Teng Fong Charitable Foundation Ltd.  
Provost Estates Ltd.  
Richemont Asia Pacific Limited - Cartier  
Ronald and Rita McAulay Foundation  
Roots Environmental (HK) Ltd.  
Rusy & Purviz Shroff Charitable Foundation  
S. K. Yee Medical Foundation  
Satinu Markets Limited  
Shui On Centre Company Limited.  
Superb Earn Ltd.  
The D. H. Chen Foundation  
The Lees Charitable Foundation Ltd.  
The Ohel Leah Synagogue Charity  
The S. H. Ho Foundation Limited  
The Wang Family Foundation  
The William E. Connor Foundation, Inc  
Thomas H.C. Cheung Foundation Limited  
Wellable Holdings Ltd.  
WHCC LTD  
Wing Sum Construction & Eng. Co. Ltd.  
馮志龍先生  
鄭慶堯先生

## FINE ART ASIA

Ms. Cheuk Ka Wai, Cherie  
Mr. Cheung Ho Keung, Edward  
Mr. Chow Chun Fai  
Mr. Chui Pui Chee  
Mr. Fung Lik Yan, Kevin  
Mr. Fung Wing Kee, Raymond  
Mr. Koon Wai Bong  
Mr. Kum Chi Keung  
Mr. Frog King Kwok  
Mr. Lee Chin Fai, Danny  
Mr. Leung Kui Ting  
Mr. Leung Shiu Kee, Eric  
Ms. Li Wei Han, Rosanna  
Mr. Tong Wai Kit, Damon  
Mr. Tsang Cheung Shing, Johnson  
Mr. Wai Pong Yu  
Mr. Wong Chun Hei  
Mr. Wong Hau Kwei  
Ms. Wong Sze Wai  
Mr. Yau Wing Fung

Ms. Yeung Kwok Fan, Margaret  
Ms. Zhang Xiaoli  
Fine Art Asia

## PINK REVOLUTION

Ms. Anjaylia Chan  
Ms. Vicky Chan  
Ms. Yoyo Chan  
Mr. Francis Cheng  
Ms. Sammi Cheng  
Ms. Angel Chiang  
Ms. Josie Ho  
Ms. Christine Kuo  
Ms. Gigi Lai  
Ms. Coffee Lam  
Ms. Milky Ng  
Ms. Phoebe Sin  
Dr. Janice Tsang  
Ms. Natalie Tong  
#legend  
Adamas Motors Limited  
AEC Limited  
ALDI Sourcing Asia Ltd.  
ALF Retail Hong Kong Limited  
AlixPartners Hong Kong Ltd.  
Apollo Management Asia Pacific Ltd.  
Asia Medical Specialists  
Australian International School Hong Kong  
Avery Dennison Hong Kong BV  
Baker & McKenzie  
Bank SinoPac Hong Kong  
Bird & Bird  
BlackRock Hong Kong Ltd.  
Blooming Buds Preschool and Child Care Centre  
Bryan Cave Leighton Paisner LLP  
Calvin Klein  
Calypso Technology Ltd.  
Carthy Ltd.  
CheckCheckCin Holdings Ltd.  
China Aoyuan Group Ltd.  
China CITIC Bank International Ltd.  
Chun Wo Construction & Engineering Co. Ltd.  
Cinda International Holdings Ltd.  
Cisco Hong Kong Limited  
CLSA Ltd.  
Clyde & Co.  
Commonwealth Bank of Australia  
Construction Industry Council  
CosMax Medical Centre



Crown Worldwide (HK) Ltd.  
Crown Worldwide Holdings Ltd.  
CS Legend Corporate Services Ltd.  
CYS Associates (Hong Kong) Ltd.  
Delta Asia Financial Group  
Demure Plus Ltd.  
DFS Group Ltd.  
ecco  
Emay Plus  
Eternal Optical & Perfumery (Far East) Ltd.  
Expat Living  
Finnovasia Ltd.  
Flex  
Flex Studio  
Fong Shu Fook Tong Foundation  
Fresenius Medical Care Hong Kong Ltd.  
Goudie Associates Ltd.  
H.K. Convention & Exhibition Ctr.  
Management Ltd.  
Harting (HK) Ltd.  
Her own words  
Herbert Smith Freehills / Peregrine Services Ltd.  
HeterMedia Services Ltd.  
Holman Fenwick Willan  
Horizon (HK) CPA Ltd.  
Howse Williams  
ICAP (H.K.) Ltd.  
ICD Security Solutions (HK) Ltd.  
Iron Feet Mum  
Kam Dao Printing Co. Ltd.  
Kids 2 Far East Ltd.  
Knight Frank Hong Kong Ltd.  
Lan Kwai Fong Group  
LCA Solutions Ltd.  
Lewis Silkin  
Lin & Partners Distributors Ltd.  
Link Asset Management Ltd.  
Linkedin HK Ltd.  
Long Hin Medical Ltd.  
M Moser Associates Ltd.  
MaskOn\_  
Matilda Int'l Hospital  
May 16  
Mayer Brown  
Mazars CPA Ltd.  
Modern Dental Group  
Mott MacDonald HK Ltd.  
MTR Corporation Limited  
Nan Fung Development Limited  
Neuberger Berman Asia Ltd.  
New Island Printing Group Co. Ltd.  
Novartis Pharmaceuticals (HK) Ltd.  
Number One PR Communication Limited  
OT & P Healthcare

Pacific Coffee  
PCCW Ltd.  
PIMCO Asia Ltd.  
PizzaExpress (HK) Ltd.  
Prenetics Ltd.  
Principal Insurance Co. (Hong Kong) Ltd.  
Privilege Vida  
PURE Apparel  
Reed Smith Richards Butler  
RevitaLash Cosmetic  
Salesforce.com Hong Kong Ltd.  
Sanne Group Asia Ltd.  
Santa Fe Relocation  
Savills Property Management Ltd.  
Sculptor Capital Management Hong Kong Ltd.  
Sertus Incorporations Ltd.  
SHI International Corp Hong Kong Limited  
Shui On Construction and Materials Ltd.  
Simmons & Simmons  
Sitoy Group Holdings Ltd.  
Sky Line Cleaning Services Co. Ltd.  
Sogo  
Sumitomo Mitsui Finance & Leasing (Hong Kong) Ltd.  
Sun Life Hong Kong Ltd.  
Tang Che Man & Co.  
Tesco International Sourcing Limited  
The Bank of East Asia Ltd.  
The Helena May  
The Hong Kong Chartered Governance Institute  
Transamerica Life (Bermuda) Ltd.  
Trenner Ind. Ltd.  
Trikon Asset Management  
Trinity Universal Ltd.  
Turner & Townsend Ltd.  
Umicore Marketing Services (HK) Ltd.  
Union Hospital  
Utmost Worldwide Ltd.  
Vanhoik Design Ltd.  
Vistra Corporate Services (HK) Limited  
Walkers (Hong Kong)  
Waller Ma Huang & Yeung  
Weber Shandwick Worldwide  
William E. Connor & Associates Ltd.  
Withersworldwide  
Woods Bagot Asia Ltd.  
XOVÉ  
Zojirushi  
宏寰集團有限公司  
優樂生活國際有限公司

#### **STRIDE FOR A CURE**

Mr. Lai Yai-Cheung

Mr. Terry Hart  
Ace Kitchen Ltd.  
Bright Diva International Limited  
Determinant  
Hong Kong Stoma Association Ltd.  
Kam Dao Printing Company Limited  
Mason Global Ltd.  
PizzaExpress (HK) Ltd.  
Queen Mary Hospital - Dept. of Pathology  
Roche Hong Kong Ltd.  
Sha Tin College  
Stoma Group  
Sunflower Network  
The Brightening Association (Hong Kong) Limited  
The Hong Kong Bone Marrow Transplant Patients' Association Limited  
The Hong Kong Pioneers Mutual Support Association Ltd.  
The New Voice Club of Hong Kong Limited  
TikiTiki Bowling  
Vita Green Health Products Co. Ltd.  
Zojirushi  
樂善舞揚

#### **IN MEMORY & LEGACY GIVING**

Ms Suk-Ha Lam  
Miss Man-Wah Lau  
The late Mr. Shum Tat Keung  
Mr. Wong Ping-Hung  
方紫雲女士  
唐小屏女士 (已故)  
張淑珍小姐

#### **MISCELLANEOUS FUNDRAISING EVENTS**

Mr. Francis Cheng  
Mr. Blake Ireland  
Ms. Kai-Yin Lo  
Mr. Yung Sze Shui, Andy  
Aquila Healthcare Ltd.  
AstraZeneca  
Bloomberg L.P.  
Cellomics International Limited  
China Resources Charitable Fund  
CPA Australia  
Esic Synergy Dragon Club  
Gift and Premium Enterprise Ltd.  
Kerry Properties Limited  
Northcroft H. K. Ltd.  
PizzaExpress (HK) Ltd.  
Ralph Lauren (Hong Kong) Retail Company Limited  
Stretch Guru Limited  
Synergy Association International, Glory Chapter  
T. Rowe Price  
Taikonaut

Tarmac Management Limited  
The Cancer Crusade Angels Service Society  
of Hong Kong  
TransAsia Private Capital Ltd.  
TungYao Ceramics  
Tycoon Group Holdings Limited  
Vita Green Health Products Co. Ltd.  
Vivienne Tam (Hong Kong)  
Yozme Company Limited

#### **GYNAECOLOGICAL CANCER AWARENESS CAMPAIGN**

Dr. Mandy Chu

#### **COLORECTAL CANCER AWARENESS CAMPAIGN**

Ms. Erica Chan  
Dr. Yuen Siu-tsan  
Mr. Collin Ng

#### **PROSTATE CANCER AWARENESS CAMPAIGN**

Mr. and Mrs. Chui Kui-fan  
Dr. Ho Lap Yin  
Mr. Terence Ng

#### **CANCER BOOKLETS**

Dr. Chan Lam, Stephen  
Dr. Foo Wai Lum, William  
Dr. Kwong Wai Kay, Philip  
Dr. Shih Tai Cho, Louis  
Ms. Chun Oi Kwan, Vanessa

#### **CANCER FUND SUPPORT CENTRES**

Mr. Au Kwok Yin  
Miss Olivia Au  
Miss Queenie Au  
Ms. Au Sik Sik  
Mr. Au Wing Ho  
Dr. Chan Lam, Stephen  
Dr. Timothy Chan  
Mr. Chan Wai Kin  
Ms. Chan Wai Man  
Mr. Chan Ying Fai  
Ms. Chau Yin Shan  
Ms. Anita Cheung  
Mr. Brandon Cheung  
Mr. Dicky Cheung  
Mr. Cheung Ka Chu  
Mr. Cheung Ka Tong  
Dr. Cheung Kwok Wai, Alvin  
Dr. Cheung Ting Kin

Dr. Choi Yuen Lum, Wesley  
Mr. Chu Kwok Tung  
Ms. Joanna Chu  
Ms. Sarah Chu  
Ms. Chun Oi Kwan  
Ms. Chung Kam Oi  
Mr. Fok Chi Chuen  
Dr. Fung Kin Fen, Kevin  
Ms. Polly Fung  
Dr. Ho Lap Yin  
Ms. Vycky Ho  
Ms. Susanna Kar  
Ms. Amy Kwan  
Ms. Lai Mei Sum  
Ms. Amy Lam  
Dr. Lam Bing  
Dr. Lam Chi Ming  
Dr. Lam Ka On  
Dr. Lam Tai Chung  
Mr. Lau Ka Hing  
Dr. Law Lai Yau, Ada  
Dr. Elaine Lee  
Dr. LEE Ho Sze, Jacqueline  
Dr. Lee Wai Chung, Kirsty  
Mr. Lee Wai Heng  
Mr. Lee Sing Man  
Ms. Tina Lee  
Dr. Lee Yim Ping, Yolanda  
Ms. Leung Kit Man  
Ms. Leung Moon Kam  
Ms. Leung Wai Ching  
Ms. Sara Leung  
Ms. Yvonne Leung  
Ms. Leung Yuk Ling, Elaine  
Ms. Liu Kwai Fun  
Dr. Lo Wing Sim, Anita  
Dr. Lui Cheuk Yu, Louisa  
Ms. Cindy Mann  
Dr. Man Sui Cheung  
Ms. Joanna Ng  
Dr. Poon Ming Chun, Darren  
Ms. Pervin Shroff  
Mr. Alick Shun  
Ms. Connie So  
Mr. So Ming Fai  
Dr. So Tsz Him  
Ms. Eva Tang  
Mr. Chris Tsang  
Dr. Tsang Wing Hang, Janice  
Mr. Tse Kin Man  
Mr. Wong Chun Hang  
Mr. Wong Chun Shing

Ms. Wong Nga Shan  
Ms. Wong Wai Li  
Ms. Wong Wai Ling, Kitty  
Ms. Iris Wong  
Dr. Sze Chun Kin, Henry  
Ms. May Yeung  
Ms. Ceiling Yip  
Ms. Karen Yip  
Ms. Sandy Yip  
Ms. Yuen Lai Fong  
Clinical Division, School of Chinese Medicine -  
Hong Kong Baptist University  
Friends of the Harp  
Hong Kong Enterostomal Therapists Association  
Hong Kong Health Association  
Hong Kong International Taoist Culture Association  
Hong Kong Society of Palliative Medicine  
Hong Kong Tuberculosis, Chest & Heart  
Diseases Association  
Lovespreading Calligraphy  
Nestle Health Science  
Pok Oi Hospital - The Chinese University of  
Hong Kong Chinese Medicine Clinic cum  
Training and Research Centre (Yuen Long  
District)  
Queen Elizabeth Hospital Patient Retraining &  
Vocational Resettlement Service  
The Cancer Crusade Angels Service Society of  
Hong Kong  
The Chinese University of Hong Kong  
Integrative Medical Centre Faculty of Medicine  
The Family Planning Association of Hong Kong  
The New Hong Kong Association of Hair Design  
The Centre for Spiritual Progress to Great Awakening  
Tung Wah Groups of Hospital, Farewell  
Homecare Project  
李光浩先生  
杜海柱先生  
陳家豪先生  
雲崇先生  
嫁勢堂中式裙褂專門店

#### **FRIENDS OF CANCERLINK**

Association of Relive  
Bauhinia Club TMH  
Cheong Hong Club  
Chinese Painting and Calligraphy at Leisure Circle  
Hong Kong Adult Blood Cancer Group Limited  
Hong Kong GIST Union  
Hong Kong Stoma Association Limited  
Kin Lok Club  
Mutual Aid Association (Hong Kong) Limited

Orchid Support Group  
Prostate Peer Association  
Rising Sun Association Company Limited  
Stoma Group  
Sunflower Network  
The Brightening Association (Hong Kong) Limited  
The Hong Kong Bone Marrow Transplant  
Patients' Association Limited  
The Hong Kong Pioneers Mutual Support  
Association Limited  
The New Voice Club of Hong Kong Limited  
Tung Wah Hospital Breast Cancer Patient  
Support Group  
Yin Chun Club  
Yin Hong Club

#### **OTHERS**

Mr. Jacky Chan  
Dr. Chan Lam, Stephen  
Dr. Chan Siu Hong, Oscar  
Dr. Chim Chor Sang, James  
Mr. & Mrs. Chui Kui-fan  
Ms. Queenie Ko  
Ms. Lee On-nei, Annie  
Ms. Carol Leung  
Mr. Collin Ng  
Ms. Milky Ng  
Ms. Candy So  
Ms. Kannes Wong  
Agenda Consulting  
Bach Rescue  
DKSH Hong Kong Limited  
Hong Kong Baptist University - Jockey Club  
Chinese Medicine Disease Prevention and  
Health Management Centre  
Hong Kong Observation Wheel  
Life Solutions  
Ming Pao Weekly  
Whealthfields (Hong Kong) Ltd.  
  
Hong Kong Cancer Fund Annual Review  
supported by Kymechow

#### **PATRON**

The Hon. Mrs. Carrie Lam Cheng Yuet-Ngor,  
GBM, GBS, Chief Executive, Hong Kong SAR

#### **HONORARY PRESIDENTS**

Mrs. Sally Lo, BBS, MBE  
The Late Sir David W.C. Tang, KBE

#### **FOUNDER & CHIEF EXECUTIVE**

Mrs. Sally Lo, BBS, MBE

#### **EXECUTIVE COMMITTEE**

Mr. Robert K. L. Lo, Co-Chairman  
Dr. Andrew Stephen W. M. Yuen, Co-Chairman  
Mr. Henry D. C. Lee  
Mr. Alan H. Smith, JP  
Dr. Janice Tsang  
Dr. Thomas S. T. Yuen

#### **MEDICAL ADVISORS**

Dr. Anthony T. C. Chan  
Dr. William W. L. Foo  
Dr. Candace F. C. Ho  
Dr. Ava Kwong  
Dr. Philip W. K. Kwong  
Dr. Anne W. M. Lee  
Dr. Tony S. K. Mok  
Dr. Jonathan S. T. Sham, JP  
Dr. Janice Tsang  
Dr. William I. Wei  
Dr. Thomas S. T. Yuen

#### **AUDIT & INVESTMENT COMMITTEE**

Mr. Henry D. C. Lee  
Mr. Robert K. L. Lo  
Mr. David T. Ratliff  
Mr. Alan H. Smith, JP

#### **PROFESSIONAL ADVISORS**

Prof. Cecilia L. W. Chan, JP  
Dr. Damaris S. M. Hung  
Ms. Dora W. M. Chow  
Mr. David T. Ratliff  
Ms. Angela P. F. Wang

E	POSTAGE PAID HONG KONG CHINA 中國香港 郵資已付	Permit No. 特許編號 01833
---	--	-----------------------------

# Help to save the environment

## Sign up for the e-version of our newsletter to save paper and the environment

To receive the e-version of our newsletter, please email [public@hkcf.org](mailto:public@hkcf.org) with your name, mailing address and telephone number, so we can add you to our digital mailing list.

## Are you moving? Please keep us in the loop!

If you are moving and would like to be informed of our latest news and activities, please email your name, donor number and new contact details to [hkcf@hkcf.org](mailto:hkcf@hkcf.org) so we can update our records. Your personal information will be kept strictly confidential.

