

25 YEARS

since 1987



HONG KONG CANCER FUND

Annual Review
2012–2013

Message From Founder & CEO



“Thank you for 25 unforgettable years. None of our achievements would be possible without the generosity and dedication of people like you - our supporters, professional staff and volunteers.”

Sally Lo, MBE
Founder and Chief Executive
Hong Kong Cancer Fund

Dear Donors, Supporters and Friends,

We're delighted to report that in 2012, our 25th year, we've helped more people than ever before.

The year was incredibly rewarding as we extended our network of support throughout the community and implemented a range of new initiatives and service programmes.

Over 106,000 attendances were recorded at our three CancerLink centres, a 21% increase compared with the same period last year, and the number of registered users grew by the thousands, totalling over 14,000.

Similarly, we also saw a 34% increase in nursing consultations and a 28% rise in clinical counselling consultations.

We are particularly delighted that two internationally trained clinical psychologists joined our team, to help counsel individuals, couples or families through communication and intimacy issues, depression and even suicide prevention.

Specific projects are also making an impact. We funded a new Cancer Patients Resource Centre at the United Christian Hospital which will serve the East Kowloon population as a place where patients and their families can go to receive psychosocial support, information and care services through a wide range of workshops, therapy sessions and programmes.

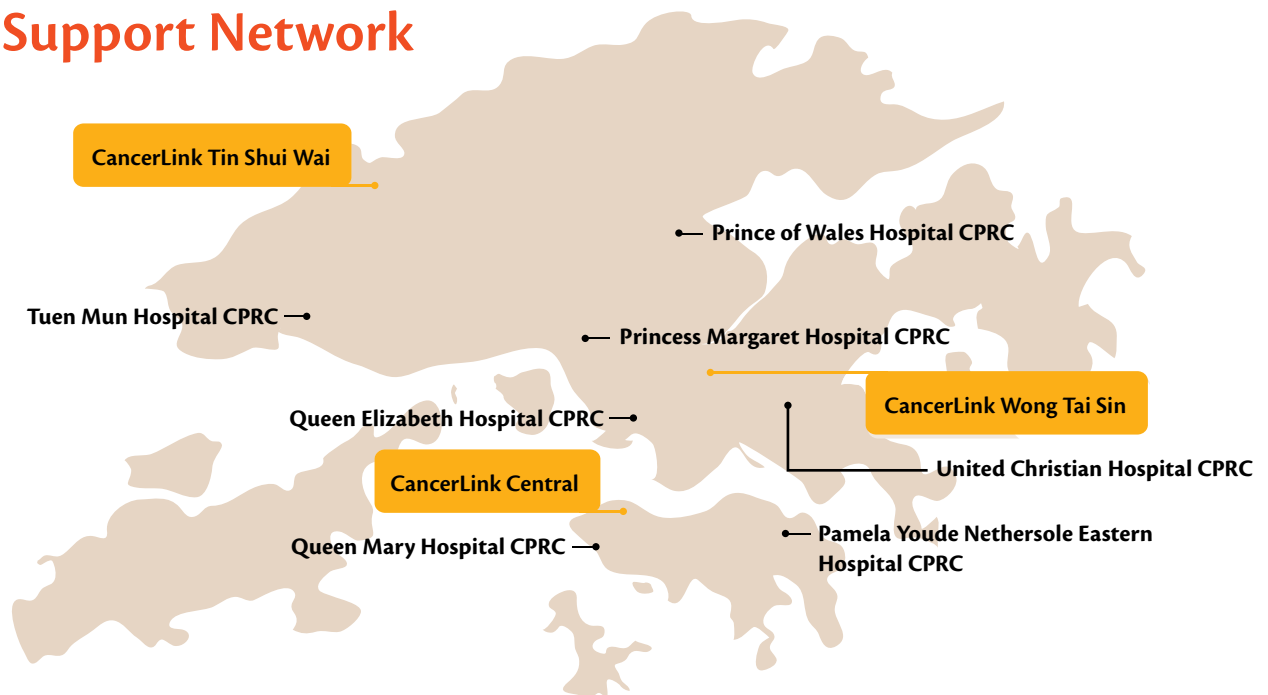
This year, we also expanded our holistic services and wellness programmes by 79%. These are extremely popular with our clients and are an important foundation for survivorship - nurturing mind, body and spirit, and rebuilding self-esteem and confidence on the way to recovery.

Personalised cancer care

At Cancer Fund, we believe everyone should receive tailor-made support.

To this end, we continue to expand and improve YOU CAN – a service where we provide age-appropriate advice and activities for 16-40 year olds, through carefully planned focus groups and peer support. Today, we are helping approximately 600 young adults.

Our Support Network



Rainbow Club has gained a foothold, with visits increasing by 9%. This family-orientated service has proved incredibly successful in helping children understand and come to terms with what is happening to their family after a relative is diagnosed.

And, our commitment to improving the quality of life for men continues as we work on a range of new approaches to encourage them to seek help and to address their specific practical, emotional and social needs.

Bringing cancer under control

Cancer does not discriminate and it knows no boundaries. It is diagnosed in around 27,000 people in Hong Kong each year.

In addition to our on-going services, we continue to invest in clinical trials and research, driving forward advancements in detection and treatment. Prevention is key. Everyday changes can help reduce the risk of cancer, and so we continue to reinforce the importance of healthy living and early detection in our extensive education campaigns, encouraging everyone to take control of their health as much as they can.

Thank you for 25 unforgettable years

None of our achievements would be possible without the generosity and dedication of people like you - our supporters, professional staff and volunteers.

We're also so grateful to our donors for believing in our mission and helping us achieve so much. Your contributions are essential and help us sustain our wide range of free services.

We hope you will continue to support us as we embark on the next chapter and strive towards the best care and support for everyone living with cancer. We are your Cancer Fund.

Sally Lo, MBE
Founder and Chief Executive
Hong Kong Cancer Fund

Who We Are



Our mission is to ensure that no one faces cancer alone. We're committed to making life better for people touched by cancer.

We are Hong Kong's largest cancer support organisation, providing free information and professional support to anyone living with or affected by cancer. With a network of free support, spanning the hospital, the home and the community, our mission is to ensure that no one faces cancer alone.

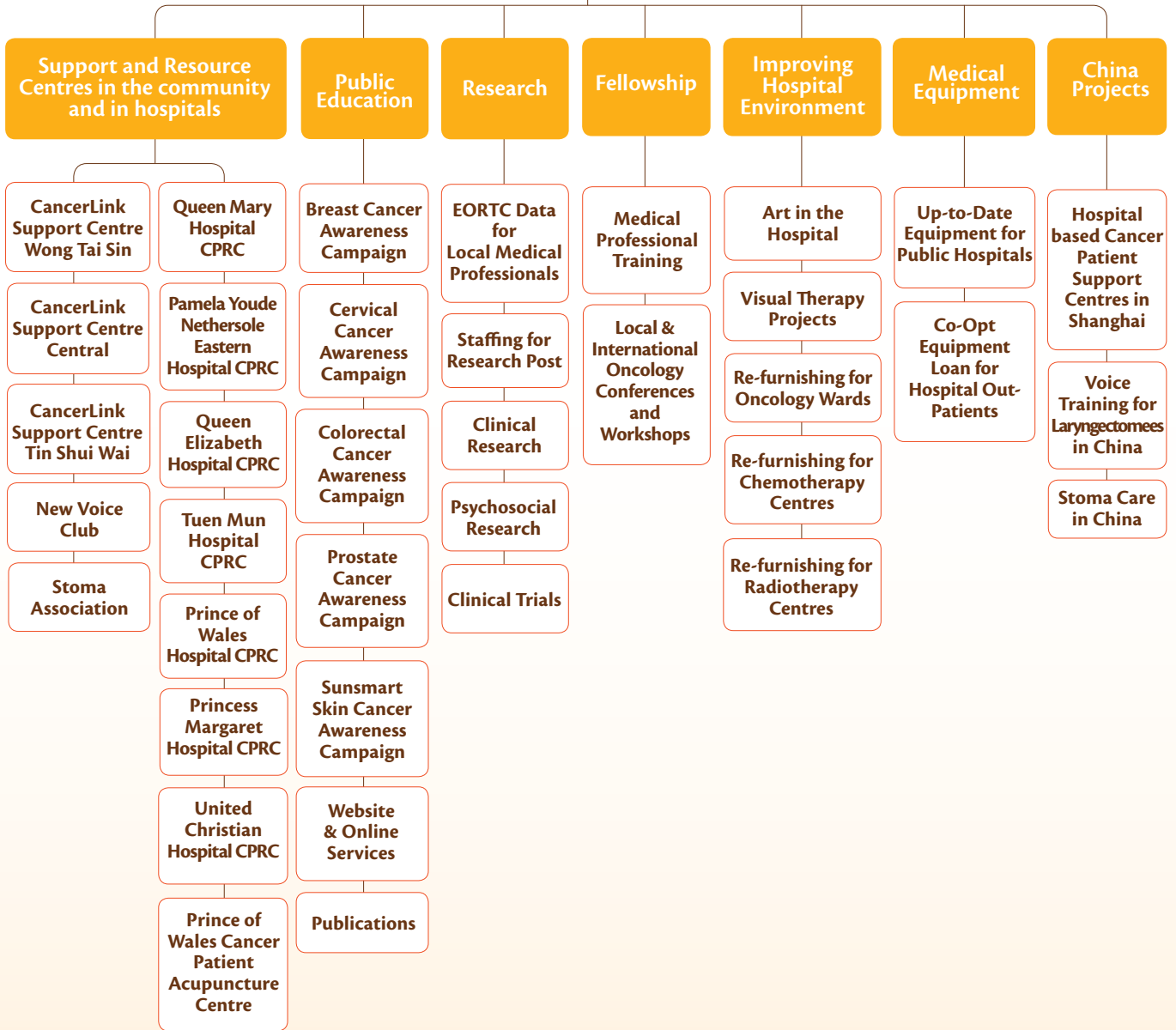
Helping to make life better for people going through their cancer

journey, we not only provide vital support to cancer patients and their families, but help to improve hospital environments, drive public awareness of cancer and fund local research and training to better the future of cancer care.

We are also a member of the European Organisation for Research and Treatment of Cancer (EORTC).



OUR NETWORK AND SERVICES



Our Milestones 1987-2012

Over the last 25 years, you've been helping us bring cancer under control. Here are just some of the ways we've been making a difference.

1988

Funded Haven of Hope Hospice – the first in Hong Kong

1991

Funded a Hospice Care Programme and overseas cancer care and nurse training



1995

Began equipment loan scheme for cancer patients and funded the first free Cervical Screening Clinic at Prince of Wales Hospital



1997

Opened CancerLink Support Centre in Wong Tai Sin. Launched the CancerLink Hotline

1987

Established with the first English support group, CanSurvive



1994

Opened Cancer Patient Resource Centres at Tuen Mun and Pamela Youde Nethersole Eastern Hospitals. Funded the staffing of a clinical psychologist at Tuen Mun Hospital



1998

Began distribution of our breast cancer Reach to Recovery packs to hospitals across Hong Kong



1992

Opened the first Cancer Patient Resource Centre at Queen Mary Hospital



1996

Opened the Cancer Patient Resource Centre at Queen Elizabeth Hospital





2000

Established the annual Celebration of Life event to honour cancer survivors

2001

Joined government task force on cancer control



2003

Opened the Cancer Patient Resource Centre at Prince of Wales. Began distribution of our nasopharyngeal cancer Reach to Recovery packs to hospitals in Hong Kong



2006

Opened CancerLink Support Centre in Central. Funded the new Ambulatory Cancer Care Centre at Prince of Wales Hospital

2008

Launched the Homecare Programme



2009

Funded the new Acupuncture Centre at the Prince of Wales Hospital

2004

Opened two Cancer Patient Support Centres in Shanghai



2007

Opened the Cancer Patient Resource Centre at Princess Margaret Hospital



2011

Opened CancerLink Support Centre in Tin Shui Wai. Official commencement of Rainbow Club and YOU CAN services for young adults



2002

Partnered with the Hong Kong Council on Smoking & Health (COSH) to lobby government on the indoor smoking ban

1999

Launched the visual therapy project at the Pamela Youde Nethersole Eastern Hospital and began funding of the Gastrointestinal Cancer Registry

25
YEARS
2012

How We Helped in 2012 - 2013

14,709

people received comfort, information and advice through our CancerLink Hotline



We helped **577** young adults with age-appropriate support through our YOU CAN service



Our Rainbow Club cared for **1,221** children and **500** families, receiving **11,868** visits, an increase of 54% on last year



13,491 cancer survivors and patients are part of our Friends of CancerLink peer support network



39,007

attendances at our psychosocial workshops and therapeutic groups, an increase of 15%



106,149

visits to our three CancerLink centres, a 21% increase on the year before



7,382

clinical counselling attendances to help people deal with the emotional issues of living with cancer



We brought practical and emotional support directly to **147** clients as part of our homecare service



We delivered **2,180** Reach to Recovery packs to those undergoing treatment for breast and nasopharyngeal cancer



13,619 attendances at our Wellness programmes helping cancer survivors discover a sense of peace and self-control, an 82% rise on last year



We offered **\$1,911,179** worth of financial assistance to those in need through our Relief Fund, Cancer Drug Relief Fund, food programme and Prosthesis Fund



We invested **\$4,797,528** in cancer research and specialist medical equipment



962,202 requests for our information booklets containing valuable and comprehensive information to help people take control of their diagnosis



2,501 attendances for our nursing service, a 34% increase on last year



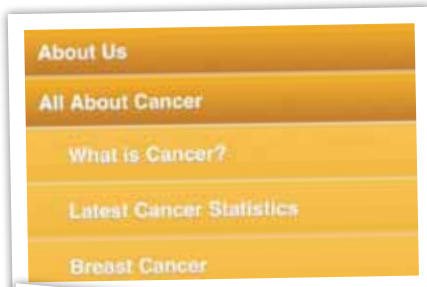
115,612

visits to our Cancer Patient Resource Centres in hospitals – a calm oasis where patients and their families can access essential resources and support



Year in Review

2012



APRIL

With the ever expanding growth of mobile communications, Cancer Fund launched a new mobile platform website to serve as a vital resource for anyone seeking reputable cancer information and details about our many free cancer support services on the go.



MAY

To celebrate 25 years of providing free care and support to people living with cancer in Hong Kong, we gathered together 25 of our supporters, survivors and friends to share their stories in a specially produced TV commercial, with the message, "we may not know each other, but we all have something in common, overcoming cancer." The popular commercial thanked the public and called for continued support, and was later nominated in the 'general' category at the TVB Most Popular TV Commercial Awards.



JUNE

Our annual colorectal cancer campaign, 'Don't Wait Till it's Too Late' continued to strengthen public awareness and understanding of colorectal cancer. Our engaging advert and educational posters reminded those over 50 on the importance of screening and early detection. Interest in our campaign website rose by 53% compared to the year before.

JULY

Cancer Fund partnered with Cancer Council Australia to further our efforts on skin cancer awareness and sun protection. We worked hand in hand to promote a range of safe and high quality skin care products which helps fund cancer research, patient support and education, and reminded everyone to Slip, Slap, Slop!



SEPTEMBER

With a donation of HK\$550,000 from Hong Kong Cancer Fund, United Christian Hospital set up a temporary Cancer Patient Resource Centre to provide psychosocial support to over 1,500 new cancer patients and their families each year.

A permanent centre will be built on completion of the new United Christian Hospital in 2018.





OCTOBER

Our 11th Pink Revolution campaign called on the community to 'Stand Up and Be Pink' in support of women with breast cancer. With the help of our new Pink Ambassador, award-winning singer Coco Lee, we raised over HK\$4million for our comprehensive breast cancer services. Our education and fundraising campaign included Dress Pink Day, Shop for Pink, a discounted mammogram offer, health talk, and roving exhibitions to reach and engage as many people as possible. Our first-ever PINK Flashmob injected a lot of fun to the launch and helped attract a wealth of publicity.



NOVEMBER

2,800 loyal supporters and cancer survivors joined our 17th annual walkathon, 'Stride for a Cure', and helped raise over HK\$4.7million. Funds from this fun-filled family event go towards important cancer research projects in Hong Kong, including clinical trials, vaccines, screening programmes and ground-breaking treatment.



DECEMBER

This month saw the launch of our targeted service promotion in public hospitals to direct newly diagnosed cancer patients and carers to our free services. Eye-catching posters were placed in and around public hospitals and mini buses travelling the hospitals routes, as well as featuring in all major newspapers.

2013



MARCH

Cancer Fund marked the 50th anniversary of the European Organisation for Research and Treatment of Cancer (EORTC). Over the last 20 years, we have been part of this global research network, donating funds to bring the most up-to-date information on trials in cancer treatment to Hong Kong.

Our Support Services

Nurturing Mind, Body and Spirit

Difficult times often test our ability to cope, to heal and to move forward in life with a positive attitude. Our Wellness Programmes help clients find the balance, energy and well-being they need to help them recover.

Cancer Fund's wellness programmes encourage and inspire survivors to live a healthy lifestyle, embrace a positive attitude and find the meaning and purpose of life.

We run a wide variety of holistic and complementary healing practices, such as Yoga, Meditation, Breathing, Yoga Nidra, Pilates, Qi Gong, Tai Chi, Feldenkrais Method, Emotional Freedom Technique, Art Therapy and more. These practices are the perfect complementary therapy for cancer patients. Not only do they help to decrease depression, insomnia, pain and

fatigue but they also help ease stress and anxiety.

Due to the numerous benefits, the popularity of our wellness classes has grown year on year. To meet increasing demand, we expanded our services, almost doubling in capacity during the year under review.

We ran a total of 61 programmes compared to the previous year's 34, an increase of 79%, and increased the number of classes, from 285 to 522. In total, we reported 13,619 attendances compared to 7,494 the year before, a rise of 82%.

Each programme is carefully designed and implemented by our compassionate and professional instructors who volunteer their time and skills to help others, and we have been lucky to work in partnership with Pure Group who donate their venues to us so we can deliver our services to as many people as possible.

In the year ahead, we will continue to enhance our wellness offerings and introduce the most modern techniques to improve the quality of life and self-confidence of those living with, through and beyond cancer.

↑ **79%**

61 programmes compared to 34 last year

↑ **83%**

The number of classes increased from 285 to 522

↑ **82%**

13,619 attendances compared to 7,494 the previous year

“CancerLink’s wellbeing classes give me so much joy and lots of positive energy. Not only have they helped me reconnect with my body and deal with some of the physical pain that accompanies treatment, but the breathing, meditation and spiritual side has taught me how to be present in a moment. It’s brought me peace of mind. I’m thankful for every new, healthy day I have.”

Lai Fong, CancerLink member

breathe • smile • now



YOU CAN - Empowering Young Adults

YOU CAN empowers young adults affected by cancer through innovative programmes and activities. Our aim is to ensure that everyone has age-appropriate support so they can get busy living.



To help young people face the many challenges of cancer, CancerLink started a new youth support programme 'YOU CAN' in 2011. This year, we reached almost 600 members and with numbers rising, the popularity of the group is evident.

YOU CAN was designed specifically to engage and resonate with young people and address their specific needs when it comes to cancer care and support. Our unique set of services includes workshops relating to issues such as relationships, sex and employment, a facebook peer support group, and psychotherapeutic and counselling services.

Great care has been taken to tap into our young clients' interests and last year we extended our range of programmes, introducing more team-building and bonding activities, such as adventure-based leadership training, encouraging this group to come together for

support, to learn new skills and have fun.

We know that life can be very different in your 20s to 30s and as we move forward, we will continue to customise our services further so that everyone can get the right support they need.

“As a young person with cancer, it can be hard to find people who understand what you're going through. When I was diagnosed, I felt isolated and was in desperate need of reassurance. Luckily, I found Cancer Fund. It doesn't have to be such a lonely experience. At YOU CAN, I found lots of support and understanding. Through meeting many new friends who have gone through a similar experience and taking part in fun activities, I stopped feeling like an outsider and felt like myself again.”

Daniel Chan, YOU CAN member

Cancer Drug Relief Fund



Our new 'Cancer Drug Relief Fund' helps to lessen the cancer burden for families with financial hardship.

To reach the next level of cancer support, in May 2012, we established the Cancer Drug Relief Fund. A joint effort with GlaxoSmithKline, this pilot project is dedicated to offering financial assistance by way of subsidised cancer drugs to low income patients and those in the 'sandwich class'.

For families that are already struggling to make ends meet, a cancer diagnosis and the impending costs of cancer treatments can be a weight that is too much to bear. In many cases the average cost for a full course of cancer treatments can exceed HK\$20,000 per month, similar to the median monthly household income in Hong Kong, making the drugs unaffordable for many.

The Cancer Drug Relief Fund subsidises two types of drugs, namely Topotecan for cervical, ovarian and small cell lung cancer and Lapatinib for breast cancer. These drugs help with symptom control and prolongation of survival, giving patients an improved quality of life. Over a three year period we aim to

provide support to 600 individuals at a quota of 200 cases a year.

We hope that, along with our existing Hardship Fund, this will help lessen the cancer burden for families with financial hardship and go some way to making their cancer journey just that bit easier.

“Cancer Fund is committed to helping make life better for people touched by cancer and increasing a cancer patient’s quality of life is an important part of this commitment. This pilot project is a major step forward and it is our hope that the Fund will eventually expand to include more drugs and reach more people in the future.”

Sally Lo, Hong Kong Cancer Fund's Founder and Chief Executive

Singing for the Soul

“I work for Cancer Fund as an accountant but last year, I decided to volunteer to help produce a choral concert by our cancer survivors.

I have always loved singing and know how much it lifts my own spirits, so it was wonderful to see the effect it had on the performers.

I realised just how much it meant when one of our members had a chemotherapy session on the day of a practice session but still came along. She said singing reminded her how it felt to be alive and in

the moment. It helped her stop worrying about what might come tomorrow.

It also brings a real joy and energy to those in the audience. Nearly everyone ends up on their feet singing along to all the golden oldies. Letting it all out through music just works. It's incredibly liberating.

Originally I thought I was only doing a small favour but I know I'm part of something much bigger. I'm glad I'm a volunteer, I've got so much out of it and I'm already looking forward to planning next year's concerts.”

Bill Ng - Hong Kong Cancer Fund Head of Accounting & Treasury and CancerLink volunteer



Research Highlights



Each year we fund valuable research projects to find ways to better prevent, detect and treat cancer, to help bring it under control.

Preventing Colorectal Cancer through Diagnosis & Research Programme

Cancer Fund continued to support this free, population-wide genetic screening, diagnosis, counselling, and research programme that aims to prevent colorectal and gynaecological cancer in families with a high risk due to specific inherited genes, granting HK\$1.6million to the project in the year under review.

Through the generosity of our friends, hundreds of lives have been saved. In the last year 124 families received help, and since the project began in 2006, 816 families, 2,005 individuals and 4,687 relatives have benefited from the programme.

Those proven gene carriers are now receiving appropriate preventive screening, with over 250 pre-cancerous lesions or early stage cancers detected and treated, sparing them from major debilitating operations, chemotherapy or radiotherapy.

Tracing the mutated gene across the globe

This research discovered that around 20% of families carry the same mutation. DNA fingerprinting confirmed they all originated from the Guangdong province of China and share a common ancestor who lived around 550 -2,575 years ago.

Since emigrants from Guangdong established large Chinese communities abroad in the 19th and 20th centuries, this knowledge has allowed researchers to trace, screen and treat these descendants from all over the world.

Identification of a new gene responsible for inherited colorectal cancer

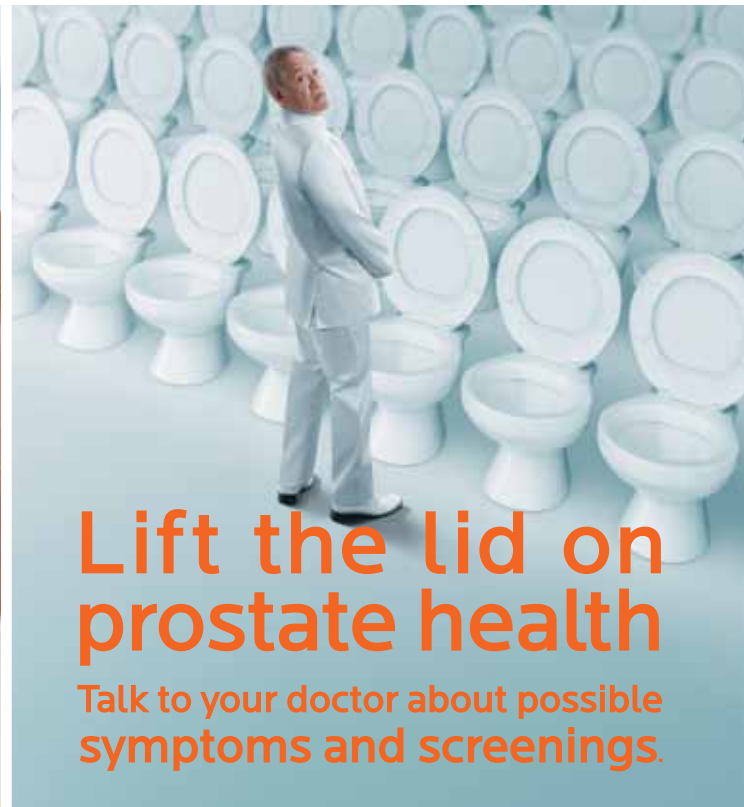
This groundbreaking study has also discovered a new gene which causes hereditary colon cancer (Lynch Syndrome). As a result, the worldwide standard for genetic diagnosis protocol now includes mutation testing for this gene.

Other 2012-2013 Research Projects

- Combating liver cancer through molecules, Chinese University of Hong Kong
- Developing a vaccine for cancer linked to the Epstein Barr Virus, Chinese University of Hong Kong
- Improvements in NPC treatment, Hong Kong Nasopharyngeal Cancer Study Group
- Assessing unmet needs in different groups of cancer patients post-treatment, University of Hong Kong
- Study of the psychosocial needs and psychological distress in women with advanced breast cancer, University of Hong Kong
- The effect of yoga therapy on post-operative side effects among women with breast cancer, University of Hong Kong
- Optimising patient decision making for primary surgical breast cancer treatment, University of Hong Kong
- Hereditary Gastrointestinal Cancer Programme, University of Hong Kong & St. Paul's Hospital
- European Organisation for Research and Treatment of Cancer (EORTC)

Raising Awareness

Our public education campaigns are building a cancer smart community by boosting awareness and promoting the importance of early detection and healthy living.





彩虹會
RAINBOWCLUB

A free service of Hong Kong Cancer Fund

Children Supporting Children

This year, Cancer Fund with Metro Radio organised 'Children Supporting Children', a campaign to educate primary school students on how to support classmates, friends and family living with cancer. Through interactive games and presentations, our registered social workers from CancerLink explained the basics of cancer and introduced our Rainbow Club service to over 3,000 children.

The campaign also included a comic design competition, and local pop singers and renowned illustrators worked with pupils to draw pictures demonstrating the Children Supporting Children theme. There was a great response with over 5,300 drawings received and 20 winners from different categories were selected.



Going Digital

This year we launched all our education campaigns on digital platforms to reach and respond to as many people as possible.

This approach has proved very popular with the public. Within the year, we increased the number of our Facebook fans from 11,000 to 18,000 (as of March 2013) and the number of visitors accessing support on our website grew by 26%.



Inspiring Others



Hong Kong Cancer Fund's annual month-long breast cancer awareness and fundraising campaign, "Pink Revolution", again proved more popular and successful than previous years. With the help of our Pink Ambassador, Coco Lee, we raised more than HK\$4million.

Additionally our Dress Pink Day and Shop for Pink events proved incredibly successful. More than

4,000 participants joined Dress Pink Day, raising funds towards our free breast cancer services, and 20 retailers took part in Shop for Pink by donating part or all of the proceeds from the sale of selected pink products.

We were very grateful to have The Body Shop® as our Major Sponsor again, as well as other generous sponsors, Shanghai Tang, Zojirushi and PizzaExpress who believe in our cause.



Stride for a Cure

Our main event on 18 November at Tai Tam Country Park attracted 2,800 participants including more than 300 survivors, families and corporate teams, and brought in a record-breaking HK\$4.7million. Stride for a Cure was also supported by a separate off-site indoor event at Pure Fitness.

This was also the inaugural year of an exciting, new initiative in partnership with Nike. Using a free downloadable Nike+ smartphone app, participants were able to run whenever and wherever it suited them during November, and log their time and distance automatically. We had a total of 189 individual runners who challenged themselves to run on their own.

Everyone Can Help



癌症基金會之友
CIRCLE OF FRIENDS
Restoring hope. Rebuilding life.



Our fundraising supporters, donors and volunteers are at the heart of our organisation. Our work is only possible thanks to their generosity. Together, we can ensure that no one has to go through cancer alone.

Circle of Friends – a key and stable source of income

Our monthly giving programme, Circle of Friends is our main source of income. It provides a stable funding stream, allowing us to sustain, improve and expand our free services in the hospital and community. With more friends, we can help more people. This is why growing Circle of Friends remains a priority.

DIY fundraising

Since its establishment in 2010, our DIY fundraising platform keeps growing in popularity. Last year, our supporters raised over HK\$700,000 through their own initiatives (taking part in activities such as running marathons and cycling challenges), a growth of 37% from 2011-2012.

DIY fundraising gives people the flexibility to create a personalised webpage to promote their fundraising activity on our website. In a few easy steps, anyone can design a unique webpage for a special event or activity, and invite friends or colleagues to make a donation directly to Hong Kong Cancer Fund.

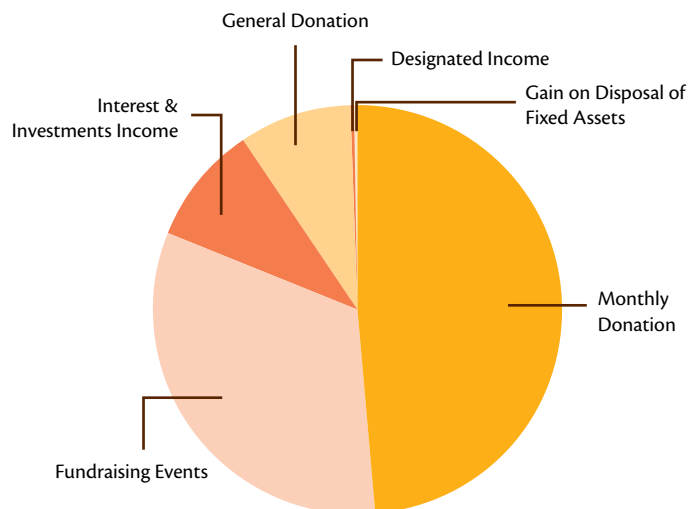
As we move forward, we will continue to explore and develop greater opportunities for people to support Cancer Fund.



Financial Highlights 2012-2013

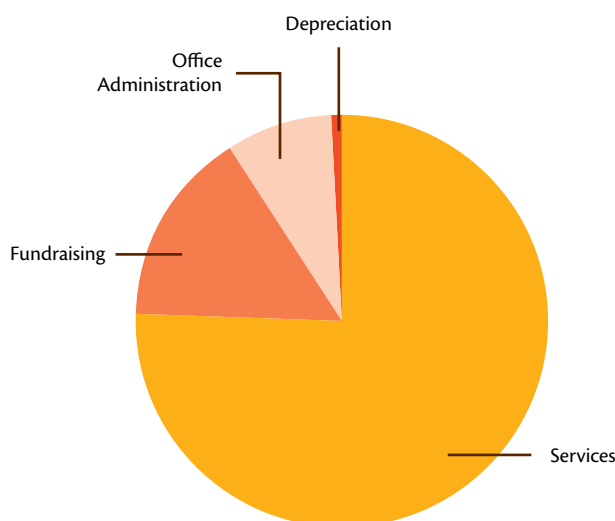
Source of Overall Income

Monthly Donation	48.87%
Fundraising Events	32.42%
Interest & Investments Income	9.32%
General Donation	8.97%
Designated Income	0.32%
Gain on Disposal of Fixed Assets	0.10%
Total Income	HK\$ 92,869,143



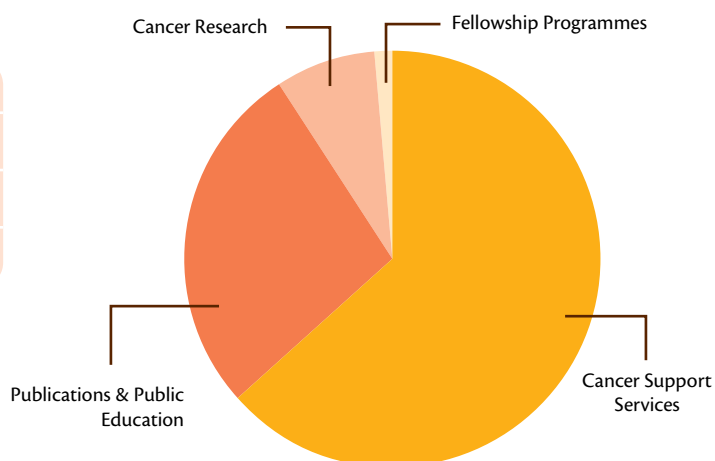
Expenditure Distributions

Services	75.57%
Fundraising	15.50%
Office Administration	8.32%
Depreciation	0.61%
Total Expenditure	HK\$ 78,596,468



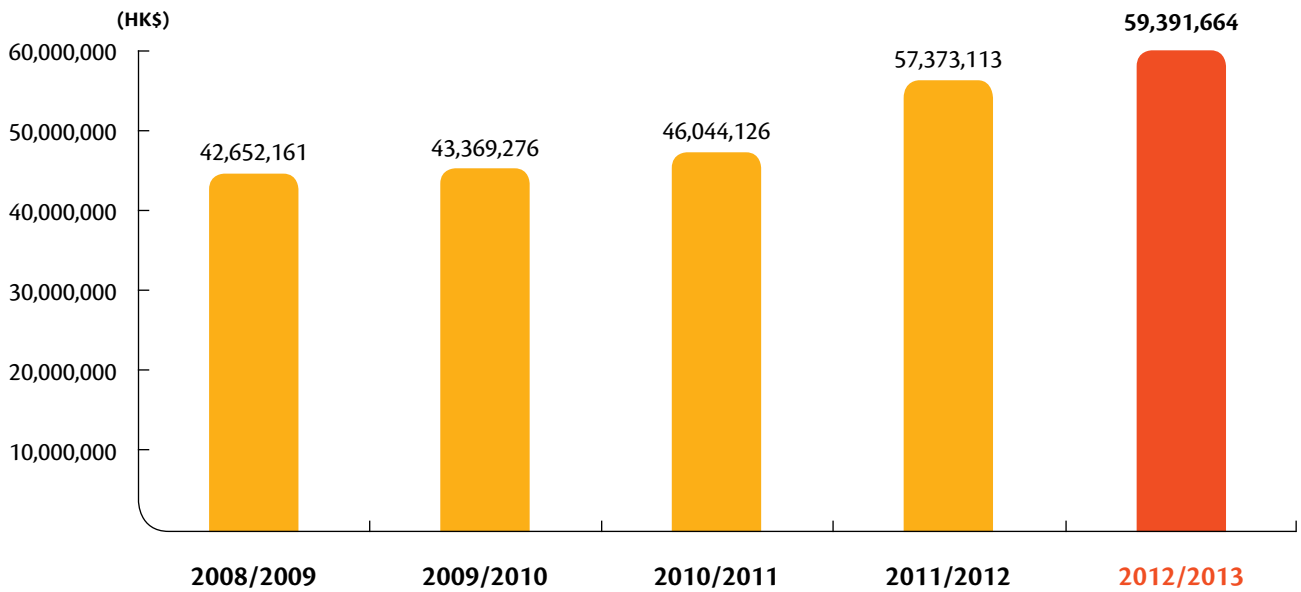
Service Distributions

Cancer Support Services	63.51%
Publications & Public Education	27.47%
Cancer Research	7.84%
Fellowship Programmes	1.18%
Total Expenditure	HK\$ 59,391,664



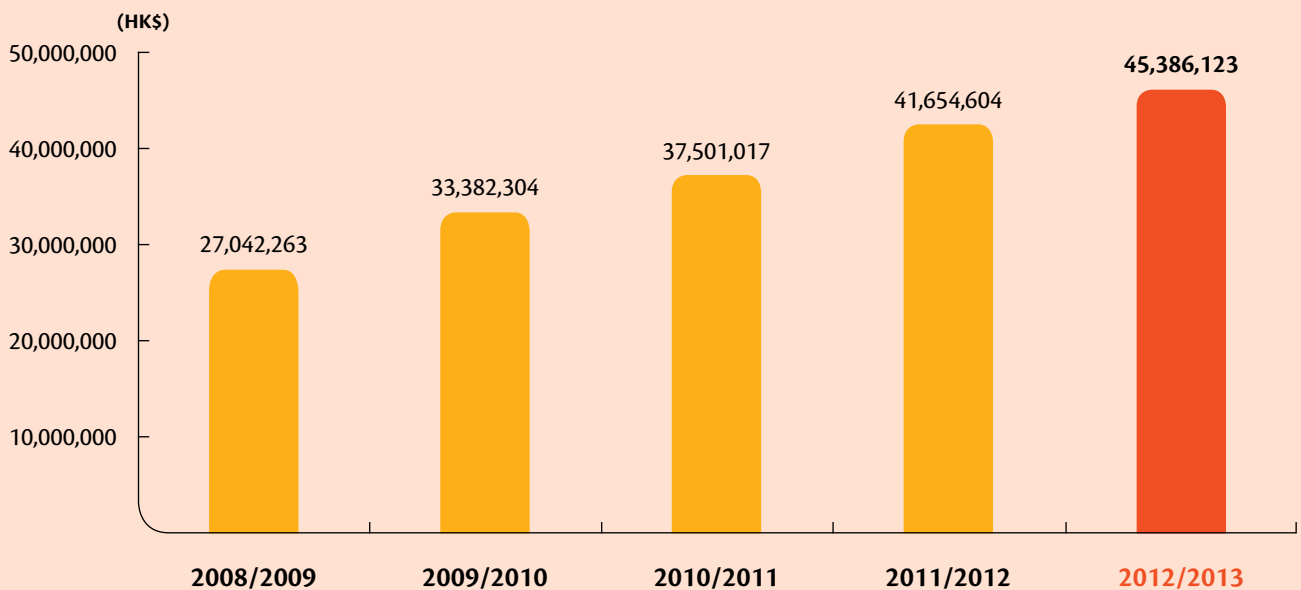
Services: Five Year Development

Financial Year	2008/2009	2009/2010	2010/2011	2011/2012	2012/2013
TOTAL SERVICES EXPENDITURE (HK\$)	42,652,161	43,369,276	46,044,126	57,373,113	59,391,664



Monthly Donation Income: 5 Year Development

Financial Year	2008/2009	2009/2010	2010/2011	2011/2012	2012/2013
MONTHLY DONATION INCOME (HK\$)	27,042,263	33,382,304	37,501,017	41,645,604	45,386,123



Thank You to Our Supporters

Appeal 2012

CTI
Macau Jockey Club
Nanyang Commercial Bank Limited
The Hongkong Electric Co. Ltd.

Gala Dinner 2013

Principal Sponsor
Louis Vuitton Asia Pacific

Major Sponsor
Mr. Eugene Chuang

Ruby Sponsor
The Most Hon. Andrew S. Yuen & Lady Yuen

Platinum Sponsors
Daisy Ho
Pansy Ho
The Rockowitz Family
Rusy M. Shroff, BBS, MBE, & Purviz R. Shroff
Burger Collection
Grosvenor Ltd.
Lindt & Sprungli (Asia-Pacific) Ltd. H. K.

Gold Sponsors
Sameer Ahmed
Dr. & Mrs. Jason Brockwell
Azura-Luna Mangunhardjono
Andrew & Lumen Man Kinoshita
Audi Hong Kong
Givenchy China Co. Limited
Greka Group
Littleton & Hennessy Asian Art Hong Kong Limited
Volkswagen Group Hong Kong Limited

Silver Sponsors
Mahnaz Lee & Friends
John Meredith
David Richards & Rev. Noreen Sui Richards
Citigroup Global Markets Asia Limited
Edrington Hong Kong Limited
Hubert Burda Media Hong Kong Limited
Hutchison Port Holdings
Jax Coco
JP Morgan
Lan Kwai Fong Properties Ltd.

Supporters
Daniel Au
Monis and Amanda Beraha
Simon Birch
Paul and Levina Cadman
Gigi Chao
Patricia Cheong
Monia Cheung
Andrew Cohen
Marc and Jennifer Compagnon
George and Katie de Tilly-Blaru
Pierre and Sonia Falcone
William Furniss
HSH Princess Ira von Fürstenberg
Max and Jane Gottschalk
David and Avisha Harilela
Gregard and Pernille Heje
Rani R. Hiranand
Eric Ho
Osman B. Kitchell

George and Margie Long
Deborah McAulay Whittle
Hon. Frank Neil and Elizabeth Newman
Sajjid and Janana Pasha
Simon and Brigitte Powell
Nicole Russo
Jay and Marissa Shaw
Dr. Wendy Simpson
So-Yon Sohn
Geoff Wong
Charles Yang
Dr. Allan Zeman, GBS, JP
ABOUTAsia Travel
Amanpuri
Anahita The Resort, Mauritius
AON
Aqua Restaurant Group

Baccarat
Belvedere
Bergé Studio
Brigetta Jewellery
Catalunya
Cathay Pacific Airways Limited
Chiv-Som
Cipriani
Clé de Peau Beauté
Conrad Macao, Cotai Central
David Yurman
Dolce & Gabbana
dragon-i
El Grande
Estée Lauder
Fine Art Asia
Finevintage
Four Seasons Hong Kong
Gaia Group
GAM Hong Kong Limited
Gateway Group
Gourmet en Provence
Grand Hyatt Hong Kong
Grebstad Hicks Communications
Guerlain
Heavens Portfolio
HSBC
InterContinental Hong Kong
Island Shangri-La Hong Kong
J. P. Cam International Limited
JIN Communications
Kaviari
kimrobinson
Lalique
L'altro
Les Vin de Pierre Montagnac
Loewe
Loro Piana
Macallan
Mae Von Professional Makeup School
Marc Jacobs
Melissa Lo Jewellery
MGM
Moët Hennessy Diageo HK Ltd.
Ms B's CAKERY
Native Union
New World Hotel, Saigon
Nuan Cashmere
Nude is Rude
Occasions PR & Marketing Ltd.
Papyrus
Prestige
Pure Dining
Pure Fitness
Royal Mansour, Marrakech

Sense Of Touch
SEVVA
Shanghai Tang
Shinta Mani Hotel, Siem Reap, Cambodia
Six Senses
Soneva
Sunseeker Asia Ltd.
Swire Properties Limited
Tabla
ten feet tall
The Hong Kong Academy for Performing Arts
The Press Room
The Prior Trust
The Ritz-Carlton Hong Kong
The Ritz-Carlton Moscow
West Island School

Hong Kong Cancer Fund Charity Auction 2012

Simon Birch
Sim Chan
Halley Cheng
Cheung Wai Man, Eunice
Fung Lik Yan, Kevin
Koon Wai Bong
Kum Chi Keung
Lam Laam, Jaffa
Lam Yau Sum
Lee Chin Fai, Danny
Eric Leung
Leung Ka Yin, Joey
Leung Kui Ting
Leung Yee Ting
Li Wei Han
Man Fung Yi
Mok Yat San
Paul Poon
Tang Kwok Hin
Tsang Chui Mei
Wong Chak Hung
Wong Lai Ching, Fiona
Stanley Wong
Crown Worldwide Group
Fine Art Asia

Major Gift 2012

Chelsea Securities Ltd.
Chinese Estates Holdings Ltd.
Global Sources
Man Fung Ind'l Holdings Ltd.
Multitex Ltd.
Ono Co. Ltd.
Stephen and Yana Peel
Rothschild Wealth Management (HK) Ltd.
Ruby & Minoo N. Master Charity Foundation
Search Investment Group Ltd.
The Bank of East Asia
The Great Eagle Company Limited
The Ohel Leah Synagogue Charity
The S. H. Ho Foundation Ltd.
The William E. Connor Foundation, Inc.
Wei Lun Foundation Ltd.

Colorectal Cancer Awareness Campaign 2012

Hereditary Gastrointestinal Cancer Genetic Diagnosis Laboratory
St. Paul's Hospital
Dr. Yuen Siu Tsan

Prof. Leung Suet Yi

Pink Revolution 2012

Eunis Chan
Ms. Coco Lee & Bruce Rockowitz
Dr. Wendy Lam
Dr. Bonita Law
Vicky Medcalf
Siu Hak
Dr. Wong Ting Ting
A. S. Watson Group
Agnès b. HK Limited
Advokatfirman Vinge
Aikon Int'l. Ltd.
Alpha Appliances Ltd.
Amiz Aromatherapy Ltd.
Andy T. H. Yuen & Co.
Anntaylor Sourcing Far East Ltd.
APW CPA Ltd.
Asia Financial Holdings Ltd.
AsiaSpa
AsiaXpat
Asurion Asia Pacific Ltd
Auspicious Foundation Ltd.
Australian Association of Hong Kong Ltd.
Baker & McKenzie
Banyan Bay Cafe
Be First Ltd.
Bupa (Asia) Limited
Buttar Hong Kong Ltd.
Canadian Consulate
Cargo Compass (Hong Kong) Ltd.
Causeway Corner Ltd.
Casablanca HK Ltd.
Century Pools Ltd.
Cheer Quality Investments Ltd.
Cheung Chau Island Women's Association
Chi Shing Garment Factory Ltd.
China Education Group
Chinese Estates Holdings Limited
Christo Pharmaceutical Ltd.
Citibank (Hong Kong) Ltd.
Citigroup Global Markets Asia Ltd.
City Super Limited
Classical Collection Ltd.
Coach Hong Kong Ltd.
Computershare Hong Kong Investor Services Ltd.
Concept Link International Marketing (HK) Limited
Conrad Macao, Cotai Central
Consonant Ind. Ltd.
Convoy Financial Group Cordells Management Services Ltd.
Crown Relocations Ltd.
Crown Worldwide Holdings Ltd.
CYS Associates (Hong Kong) Ltd.
Decent World Ltd.
Dragons Abreast HK
E. Energy Ind'l. Co.
ECA International Ltd.
ECCO Asia Pacific Ltd.
Economic Digest
Ecurie Drapeau Jaune Ltd.
Eduserve Int'l Ltd.
Fairton International Group Ltd.
Faustian Asia Ltd.
Financial Times (HK) Ltd.
First Pacific Company Ltd.
Flash On
Flex Yoga & Pilates Studio

Flight Centre
 Four Seasons Hotel
 Fuk Loi Moon Lok Yin Ngai Society
 G & F Trading (H. K.) Ltd.
 GAM Hong Kong Ltd.
 GE Capital
 Glenealy School
 Good Evening Kabayan Radio AM864 & Groove Magazine
 Grosvenor Ltd.
 Hammax (HK) Ltd.
 Harbour City
 Health Concept Hong Kong Ltd.
 Henny Fashion Wholesale Co.
 High Performance Sports Ltd.
 Hillmount Investment Ltd.
 Hind Wing Co., Ltd.,
 hmv
 Hong Kong Bars Clubs
 Hopeful Rubber Mfg. Co. Ltd.
 Hong Kong Convention and Exhibition Centre (Management) Ltd
 Hiu Lai Women's Association
 Hong Kong & Kowloon Kai-fong Women's Association
 Howse Williams Bowers
 Imaginex Group
 Ince & Co.
 Jade Nail Ltd.
 J-Long Ltd.
 Joint River Ltd.
 Jolly Learning Activities Centre Ltd.
 Jones Day
 Kaiser Investment Holdings Ltd.
 Kamla Int'l. Ltd.
 Kam Dao Printing Co. Ltd.
 Kelvin Far East Ltd.
 Keenway Industries Ltd.
 KHK (HK) Ltd.
 kimrobinson
 Kingstar International Trading Ltd.
 Kowloon Junior School
 Kowloon Women's Organisations Federation
 Kuehne & Nagel Ltd.
 Langham Place
 Li & Fung (Trading) Ltd.
 Lin & Partners Distributors Ltd.
 Linea Negra Maternity
 Long Hin Medical Ltd.
 Lufthansa German Airlines
 M Moser Associates Ltd.
 Manulife (International) Ltd.
 Marks & Spencer (Asia Pacific) Ltd.
 Mc C Communications Ltd.
 Media Contacts Ltd.
 Medicare WIG Centre (Woon Ltd.)
 Metlife Asia Pacific Ltd.
 Michelle International Transport Co. Ltd.
 Models International Ltd.
 Morgan Stanley Asia Ltd.
 Mrl Overseas Ltd.
 Ms B's CAKERY
 MSIG Insurance (Hong Kong) Ltd.
 MTR Corporation Ltd.
 National Australia Bank
 Native Union
 New Era Cap Asia Pacific Ltd.
 New K. Ind. Ltd.
 New Media Group
 New Monday
 NIKE 360 (Hong Kong)

Nomura International (HK) Ltd.
 Norton Rose Hong Kong
 Ogier Hong Kong
 On.cc
 Oriental Daily News
 PizzaExpress (H. K.) Ltd.
 Planarch Consultants Ltd.
 Playtimes Magazine
 Polar Air Cargo
 Prestige Hong Kong
 Pure International (HK) Ltd.
 Queen Elizabeth Hospital
 Queen's Electronic Manufacturing Co. Ltd.
 Quintessentially (HK) Ltd.
 Ralph Lauren Asia Pacific Ltd.
 RBS
 Regatex Manufacturers Ltd.
 REVECOCO Ltd.
 Reed Smith
 Richards Butler
 Rising Dragon Int'l Ltd.
 Sailing Boat Catering Management Ltd.
 Sally's Toy
 Sanda King Industries Ltd.
 Sanrio Wave Hong Kong
 Sassy Media Group Limited
 Securitas Security Services (Hong Kong) Ltd.
 Sentra International Co. Ltd.
 Shanghai Tang
 Sha Tin College
 SKH Tsoi Kung Po Secondary School
 SPUR Shoes
 Stephenson Harwood
 Studio 83
 Sumitomo Mitsui Finance & Leasing (Hong Kong) Ltd.
 Tang Che Man & Co.
 Tanner De Witt
 Ten Group
 Telstra Legal
 The B.S.C. Group of Companies
 The Bank of East Asia Ltd.
 The Body Shop* (Hong Kong & Macau)
 The Continuity Co. Ltd.
 The D. H. Chen Foundation
 The Graphic Label Group (HK) Ltd.
 The Hong Kong Indian Women's Club
 The Kowloon Dairy Ltd.
 The Lane Crawford Joyce Group
 The Link Management Limited
 The Family Planning Association of Hong Kong
 The Family Planning Association of Hong Kong Tseung Kwan O Women's Club
 The Girls' Brigade Hong Kong
 The Link Management Limited
 The Standard
 The Sun
 The Tokio Marine and Fire Insurance Co. (HK) Ltd
 Togo Pacific Ltd.
 Tom Lee Music Co. Ltd.
 Top Form International Ltd.
 Topcast Aviation Supplies Co. Ltd.
 Toppo Co (HK) Ltd.
 Track Mode (HK) Ltd.
 Tsang, Tam & Co.
 Tsuen Wan Lei Muk Shue Yin Ngai Society
 Tsun Fai Accounting & Secretarial Co.

U Magazine
 Ultimate Registrations Ltd.
 Umicore Marketing Services (Hong Kong) Ltd.
 Union Hospital
 United Airlines
 United Christian Nethersole Community Health Service
 Unity Health-Care Co., Ltd.
 Vanhoik Design Ltd.
 Wang Fook Realty Co. Ltd.
 Weber Shandwick Worldwide
 Weekend Weekly
 Willowood Ltd.
 Wing Fung Financial Group Ltd.
 Women's Commission
 Women's Federation for World Peace, Hong Kong
 Yuan Yin Ind'l. Works Ltd.
 Zip Magazine
 Zojirushi Hong Kong Co., Ltd.
 女主角醫學美容有限公司
 周芬記廚具坊
 信昌中西藥房
 南隆建築有限公司

Prostate Cancer Awareness 2012

Mr. Richard Ng
 Dr. Li Shu Keung

Skin Cancer Awareness Campaign 2012

Dr. Louis Shih

Stride For a Cure 2012

Dr. William Foo
 Dr. Tony Mok
 Dr. Gary Ng
 Dr. Yuen Siu-Tsan
 Geoff Wong
 Louis Yan
 192nd Kowloon Scouts of Beacon Hill School
 Air Biz Company
 Alliance Boots Sourcing (Hong Kong) Ltd.
 Alpha Appliances Ltd.
 Alpha Nature
 AMP Alumni
 Anything
 Asia One Communication Group
 Auxiliary Police Voluntary Services Cadre BIVA
 BNY Mellon
 Brother International (HK) Ltd.
 Byrne, Hickman and Partners
 Physiotherapy and Sports Injury Centres
 Cafe Deco Group
 Camp Quality Hong Kong
 Cancer Council Australia
 Center for Wu's Bunion Surgery Ltd.
 Citybus Limited
 Clover Group Int'l. Ltd.
 Composers and Authors Society of Hong Kong Ltd
 Crowne Plaza Hong Kong Causeway Bay
 Crowne Plaza Hong Kong Kowloon East
 Delia School of Canada - Elementary Section
 Delia School of Canada - Secondary

Section
 Fung Seng Enterprises Limited
 German Swiss International School
 Hereditary Gastrointestinal Cancer Genetic Diagnosis Laboratory
 Hong Kong International School
 Hong Kong St. John Ambulance
 Hong Kong University - CePort Center of Psycho-Oncology Research and Training
 Holiday Inn Express Hong Kong Causeway Bay
 Holiday Inn Express Hong Kong SoHo
 Holiday Inn Golden Mile
 Hotel Indigo Hong Kong Island
 HS Travel Int'l Co. Ltd.
 Hutchison Telecom
 Kam Dao Printing Co. Ltd.
 Kimberly-Clark (Hong Kong) Limited
 Kowloon Cricket Club
 Le Meridien Cyberport
 Manulife (International) Ltd.
 Messe Frankfurt (HK) Limited
 Multitex Ltd.
 Nike
 O'Melveny & Myers
 Ocean Park Hong Kong
 Ocean Spray
 Pamela Youde Nethersole Eastern Hospital
 PCCW Limited
 Phonographic Performance (South East Asia) Ltd
 PizzaExpress (H. K.) Ltd.
 Pok Oi Hospital
 Prince of Wales Hospital, Chinese University of Hong Kong
 Princess Margaret Hospital
 Pure Dining
 Pure Fitness
 Queen Elizabeth Hospital
 Queen Mary Hospital
 Robiff International Limited
 San Miguel Brewery Hong Kong Ltd.
 Sha Tin College
 Spicer Paper (Hong Kong) Ltd
 St. Teresa's Hospital Patient Health Resource Center
 The Bank of Nova Scotia
 The Body Shop* (Hong Kong & Macau)
 The Chinese University of Hong Kong - Liver Research Team
 The Hong Kong Federation of Youth Groups
 The Kowloon Dairy Ltd.
 The Peninsula Hong Kong
 The Rotary Club of Kowloon North
 Thong Sia Watch Co. Ltd. (SEIKO)
 Tuen Mun Hospital
 United Christian Hospital
 XTC on Ice Gelato Ltd.
 大業織造廠有限公司

Others

Jens-Peter Cam
 Chan Kin Shing
 Dora Chow
 Cilla Chung
 Mr. & Mrs. Chi-Kwan Fung
 Samson Fung
 Sylvia Ming Hsu
 Rovana T.M. Lai

Thank You to Our Supporters

Alis Lau
Michelle Leung
Justina Leung
Michelle Leung Yi Wa
Pi C.M. Leung
Stella Luk
Anthony Kwan-Chim Ma
John and Cheryl Moore
Ryoko Nakamura
Jessica Ng
Robert Ng Chee Siong
Mr. & Mrs. Stephen Peel
Paul Poon
Nerida Rigg
Yvette Robeck
Rusy M. Shroff, BBS, MBE and Purviz R. Shroff
Michelle Simms
Dr. Tam Kar Fai
Louis and Therese Thomas
Dr. Danny Wong
Vivian Wong
Peter Wood
Mr. & Mrs. Christopher Yip
A.S. Watson Group
Able Billion Ltd.
Able Team Technology Ltd.
ABOUTAsia School
ABOUTAsia Travel
Advance Corporate Management Ltd.
Altruist Financial Group Ltd.
Ammado AG
American Express International Inc.
Art & Antique International Fair Ltd.
Banyan Bay Café
Blacksmith Media Ltd.
BTIG, LLC
Bupa (Asia) Limited
Buttons & Buckles Garment Accessories Pty.
C & K Recycle Co. Ltd.
Cancer Council Australia
Capital Research Co.
Capstone Prep Education Center
Cell Therapy Technologies Ctr. Ltd.
Chanel Limited
Charities Aid Foundation America
Cheetah Ltd.
Chelsea Securities Ltd.
Chung Hing Ltd.
Chung Kin Transportation (HK) Ltd.
Cigna International
Cimigo Ltd.
Cityexplora
City of Dreams
Clear Trading Co. Ltd.
Cognizant Technology Solutions US Corporation
Cornes World Company Limited
Creative Machinery & Equipment Ltd.
Crown Worldwide Group
Da Hing (Far East) Co. Ltd.
Deloitte Consulting (Hong Kong) Limited
Deutsche Bank AG, Filiale Hongkong
Deutsche Bank AG, Singapore
Dominant 7
Dr. Joseph. Y. S. Pang Ltd.
Dr. Wong Ting Ting Clinic
Draftfab Hong Kong Ltd.
Family Medical Practice Ltd.
Flow Community Bookshop

Focus Films Ltd.
Fong Yin Cheung & Co.
Fountain Set (Holdings) Ltd.
Four Seasons Hong Kong
Fullca Properties Ltd.
Fung Yue Company Limited
Gap International Sourcing (Holdings) Ltd.
Ge Shan Art Society
Gentlemen's Tonic, Hong Kong
Get Nice Securities Ltd.
Glam'rs Co. Ltd.
Global Connection Consultancy Ltd.
Global Sources
Globe Timepieces Co. Ltd.
Gloucester Luk Kwok Hong Kong
Goldman Sachs Matching Gift Program
HK Ladies Circle
Hay Nien Foundation Ltd.
Highgate House School
HKCSS WiseGiving Ltd.
Ho Yip Property Co. Ltd.
Hong Kong Disneyland Resort
Hong Kong Golf Club
Hong Kong International Pianist Association
HSBC Global Asset Management (HK) Ltd.
HSBC Insurance (Asia-Pacific) Holdings Ltd.
Hung Fook Tong Holdings Ltd.
Hung Kei Motors Service Co.
Hush
Intelligent Nutrients
International Scholars Tuition Ltd.
Island School
Kelvin Far East Ltd.
King's View Jewellery Ltd.
Kongcan (Charitable) Foundation Ltd.
J. P. Cam International Limited
Jaguar Ltd.
Jewel Pak Int'l o/b Jewelry Packaging Ltd.
Joy Bond Enterprise Ltd.
Lau Chan & Ko
Legend Swimwear Factory Ltd.
Leung & Lau, Solicitors
Lodroe Nyima Charity Foundation Ltd.
Lok Sin Tong Leung Kau Kui College
L'Oréal Professionnel
Louis Vuitton Asia Pacific
Macquarie Group Foundation
Man Cheong Agents Co. Ltd.
Manulife (Int'l) Ltd.
Mary Tong Jewellery Co. Ltd.
Mat Wah Int'l Enterprise Ltd.
Mavisa Ltd.
Media Asia Group Holdings Ltd.
Moet Hennessy Diageo HK Limited
Moonlily (HK) Ltd.
Moore Fukuoka Ltd.
Movermonth Hong Kong
Native-speaking Eng. Teacher Sec. of the Edu. Bur.
New Era Enterprise Co. Ltd.
New Hong Kong Products Co. Ltd.
Nokia Siemens Networks HK Ltd.
Northcroft Hong Kong Ltd
Ono Co. Ltd.
Orican Asia Ltd.
P.M.C. Associates Ltd.
Palluck Industries Ltd.
Panocean Secretarial Services Ltd.

PPD Development (HK) Ltd.
Pro-Excellence Development Co.
Prosimex Co. Ltd.
Ralph Lauren Asia Pacific Ltd.
Richemont Asia Pacific Ltd.
Rising Concept Ltd.
Ruby & Minoo N. Master Charity Foundation
S.C. Johnson Ltd.
Sa Sa International Holdings Limited
Santosh Investment Holding Corporation
Savills (H. K.) Ltd.
Search Investment Group Ltd.
Show On Ltd.
Shun Tak Holdings Ltd.
Skin Health PTY Ltd.
Smart Precision Development Ltd.
Soma Int'l Ltd.
South Island School
Sporthouse Ltd.
Square Land Development Co. Ltd.
Sun Finance Company Ltd.
Sunny Creations Ltd.
Sunny Rise Pharmachem Ltd.
SYW Holdings Corp.
T.K. Leung C.P.A.
Taikonaut Ltd.
Teresa Coleman Fine Arts Ltd. Trading
The Bank of East Asia Ltd.
The Beauty Co. Ltd.
The Croucher Hong Kong Charitable Trust
The Great Eagle Company Ltd.
The Economist Group
The Firm
The Joseph Lau Luen Hung Charitable Trust
The Hong Kong Golf Club
The Hong Kong Indian Women's Club
The Ohel Leah Synagogue Charity
The S. H. Ho Foundation Ltd.
The Shamdasani Foundation
The Walt Disney Co. (Asia Pacific) Ltd.
Thomas Wan & Co.
TMax Group Ltd.
Toymates Development Co. Ltd.
Trade Power Property Consultant Co.
Travel Expert Business Services Ltd.
Transatlantic Reinsurance Co.
Tung Sinn Buddhism Taoism Society Ltd.
UBS AG
V.K. Hsu & Sons Foundation Ltd.
Veena Fashions
Vicyon Co. Ltd.
Walker Shop Footwear Limited
Wai Wai Ind'l Ltd.
Well Star Group Holdings Ltd.
Welltrade Ltd.
William E. Connor & Associates Ltd.
Willowood Ltd.
Winson Assets Management Ltd.
Word Workshop
Y.H. Tsang & Co.
Yin Expressions Ltd.
Yofi Yoga Studio & College
Yuen Hing Joss Stick
福建深度單車遊
冠輝工程有限公司
噶囉會
四明敬老扶幼慈善基金會有限公司
基督教育道會藍田堂
萬德至善社有限公司

香港動感柔力球聯合會有限公司
香港懷恩浸信教會

CancerLink

Alpha Course Hong Kong
Amoena Hong Kong Ltd.
Baptist Oi Kwan Social Service
Centre on Behavioral Health – The University of Hong Kong
Cheung Kong (Holdings) Limited
Chinese University of Hong Kong, Department of Social Work
Christian Dance Association
Dr. Angela Ng
Dr. Au-Yong Ting Kum
Dr. Chan Chi Ho, Wallace
Dr. Chan Lam
Dr. Chan Wai Hee
Dr. Cheng Ka Leung, Danny
Dr. Chi-pang Yiu
Dr. Fan Shu Ping, Dorothy
Dr. Foo W.L., William
Dr. Ho Pui Ying
Dr. Jamie Chan
Dr. Lam Bing
Dr. Lam W.T., Wendy
Dr. Lam Yeung Kit
Dr. Lee Chan Wing, Francis
Dr. Liu Chi Leung
Dr. Liu King Yin, Rico
Dr. Ng Kong Man
Dr. Peta McAuley
Dr. Tsang Wing Hang, Janice
Dragons Abreast Hong Kong
Hong Kong Baptist Hospital, Breast Care Centre
Hong Kong Blind Union
Hong Kong Christian Cancer Care Association
Hong Kong Health Association
Hospital Authority, Health InfoWorld
Hung Fook Tong
Lingnan University, Student Services Centre
Mary Kay (HK) Co. Ltd
Medicare Wig Center
Mr. Alan Lo
Mr. Carlson Leung
Mr. Chan Ka Chung, Jacky
Mr. Chan Kai Yin
Mr. Chan Yu Wai, Danny
Mr. Chu Kwok Tung
Mr. Cox Tang
Mr. David Cheung
Mr. Eric Chong
Mr. Ken Wong
Mr. Kenneth Cheung
Mr. Lam Chi Fung
Mr. Lam Kam Mo
Mr. Lau Kwong Wai
Mr. Li Jian Cheng
Mr. Lo Chak-chuen, Eddie
Mr. Lo Kam Chiu
Mr. Mark Lee
Mr. Miles Price
Mr. Ng Siu Man
Mr. Patrick Kwan
Mr. Raymond Chung (Dietitian)
Mr. So Ming Fai
Mr. To Hoi- Chu
Mr. William Wan
Mr. Wong Chi Wing

Mr. Wong Ho Yee
 Mrs. Chris Tsui
 Ms. Adeline Chan
 Ms. Alice Ho
 Ms. Alice Wong
 Ms. Angel Kwok
 Ms. Carol Yuen
 Ms. Chan Wai King
 Ms. Chan, Yuk Pui
 Ms. Cheung Ka-Yi
 Ms. Cheung Ning
 Ms. Cheung Yuen Ching
 Ms. Choi Po Chuen
 Ms. Claire Cheung
 Ms. Connie So
 Ms. Crystal Chu
 Ms. Elaine Leung
 Ms. Estella Li
 Ms. Gabriela Kurmann
 Ms. Irene Siu
 Ms. Jan Moor
 Ms. Jennifer Chow
 Ms. Kitty Lee
 Ms. Kwok Sze Ling
 Ms. Lai Mie Sun
 Ms. Lam Chui Wai, Connie
 Ms. Lau Siu Wai
 Ms. Lily Chung
 Ms. Liu Kwai Fun
 Ms. Mary Liu
 Ms. Ng Cheuk Wah
 Ms. Pervin Shroff
 Ms. Rainbow Ho
 Ms. Ripley Wong
 Ms. Ritchie Kwok
 Ms. Soonie-Shroff Gander
 Ms. Tse Mee Wah, May
 Ms. Victoria Kwong
 Ms. Wong Suet Mei
 Ms. Yasmin Li
 Ms. Yu ka ling
 Ms. Yuen Shuk Man
 Ms. Zhou Keary R
 New Wine Ministries Hong Kong Limited
 Pamela Youde Nethersole Eastern Hospital-
 CPRC
 Physical Fitness Association of Hong Kong,
 China (PFA)
 Pok Oi Hospital - The Chinese University of
 Hong Kong Clinical Centre for Teaching
 and Research in Chinese Medicine
 Prince of Wales Hospital –Acupuncture
 Centre
 Prince of Wales Hospital- CPRC
 Princess Margaret Hospital-CPRC
 Queen Elizabeth Hospital- CPRC
 Queen Elizabeth Hospital-Department of
 Occupational Therapy
 Queen Mary Hospital-Cancer Care & Support
 Unit
 Shatin International Medical Centre Union
 Hospital
 Social Welfare Department-Wong Tai Sin
 Integrated Family Service Centre
 St. Teresa's Hospital
 Stewards Limited, LIFE EDUCATION PROJECT,
 Playback
 The Body Shop® (Hong Kong & Macau)
 The Cancer Crusade Angels Service Society of
 Hong Kong Ms. Lillian Chan
 The Heart Touch Charity Foundation Limited
 The Hong Kong Society for Rehabilitation,

Community Rehabilitation Network, Wang
 Tau Hom Centre
 The Look Studio
 Tuen Mun Hospital-CPRC
 Tung Wah Group of Hospitals, Lok Hong
 Integrated Community Centre for Mental
 Wellness
 United Christian Hospital, Patient Resource
 Centres
 Yan Chai Hospital cum Hong Kong Baptist
 University Chinese Medicine Clinic cum
 Training and Research Centre (Ha Kwai
 Chung)
 Yan Oi Tong Chinese Medicine Polyclinic
 cum The Chinese University of Hong Kong
 Chinese Medicine Clinical Training and
 Research Centre

方佩琳護士
 何昌恒先生
 何詩敏小姐
 吳美君小姐
 冼唯勤師傅
 林少鳳女士
 范麗娟小姐
 凌惠賢護士
 戚月明小姐
 陳國賓營養師
 彭秀芝女士
 黃佩華小姐
 黃卓敏小姐
 楊秀珍小姐
 聖言書藝社
 趙百欣小姐
 趙百欣小姐
 蔡悅雯小姐
 曉騰慈善基金有限公司
 鍾毓琦(註冊營養師)
 羅桂芳女士

Friends of CancerLink

Association of Relieve
 Bauhinia Club
 CanSurvive
 Cheong Hong Club
 Chinese Painting and Calligraphy at Leisure
 Circle
 HK Adult Blood Cancer Group
 Hong Kong Bone Marrow Transplant Patients'
 Association
 Hong Kong Pioneers Mutual Support
 Association Ltd.
 Kin Lok Club
 Mutual Aid Association
 New Voice Club of Hong Kong
 Orchid Support Group
 Stoma Group Tuen Mun Hospital
 Sun Flower Network
 The Brightening Association
 The Hong Kong Stoma Association
 The Rising Sun
 Yin Chun Club
 Yin Hong Club

Patron

The Hon. C. Y. Leung, GBM,
 Chief Executive, Hong Kong SAR

Honorary Presidents

Mrs. Sally Lo, MBE
 Sir David W. C. Tang, KBE

Executive Committee

Mr. Robert K. L. Lo, Co-Chairman
 Dr. Andrew W. M. Yuen, Co-Chairman
 Dr. Tony S. K. Mok
 Dr. Wesely C. T. Shiu
 Mr. Alan H. Smith, JP
 Dr. S. T. Yuen

Medical Advisors

Dr. Anthony T. C. Chan
 Dr. William W. L. Foo
 Dr. Candace F. C. Ho
 Dr. Ava Kwong
 Dr. Anne W. M. Lee
 Dr. Tony S. K. Mok
 Dr. Jonathan S. T. Sham, JP
 Dr. William I. Wei
 Dr. S. T. Yuen

Investment Committee

Mr. Henry D. C. Lee
 Mr. Robert K. L. Lo
 Mr. Alan H. Smith, JP

Professional Advisors

Prof. Cecilia L. W. Chan, JP
 Prof. Richard Fielding
 Ms. Camila S. Y. Li
 Mr. Christopher J. Marriott
 Mr. David T. Ratliff
 Mr. Christopher J. Smith
 Prof. Sheila F. Twinn
 Ms. Angela P. F. Wang



PRINTED MATTER

E	POSTAGE PAID HONG KONG PORT PAYE	PERMIT NUMBER 2548
----------	--	--------------------------

Economy



So no one faces cancer alone.